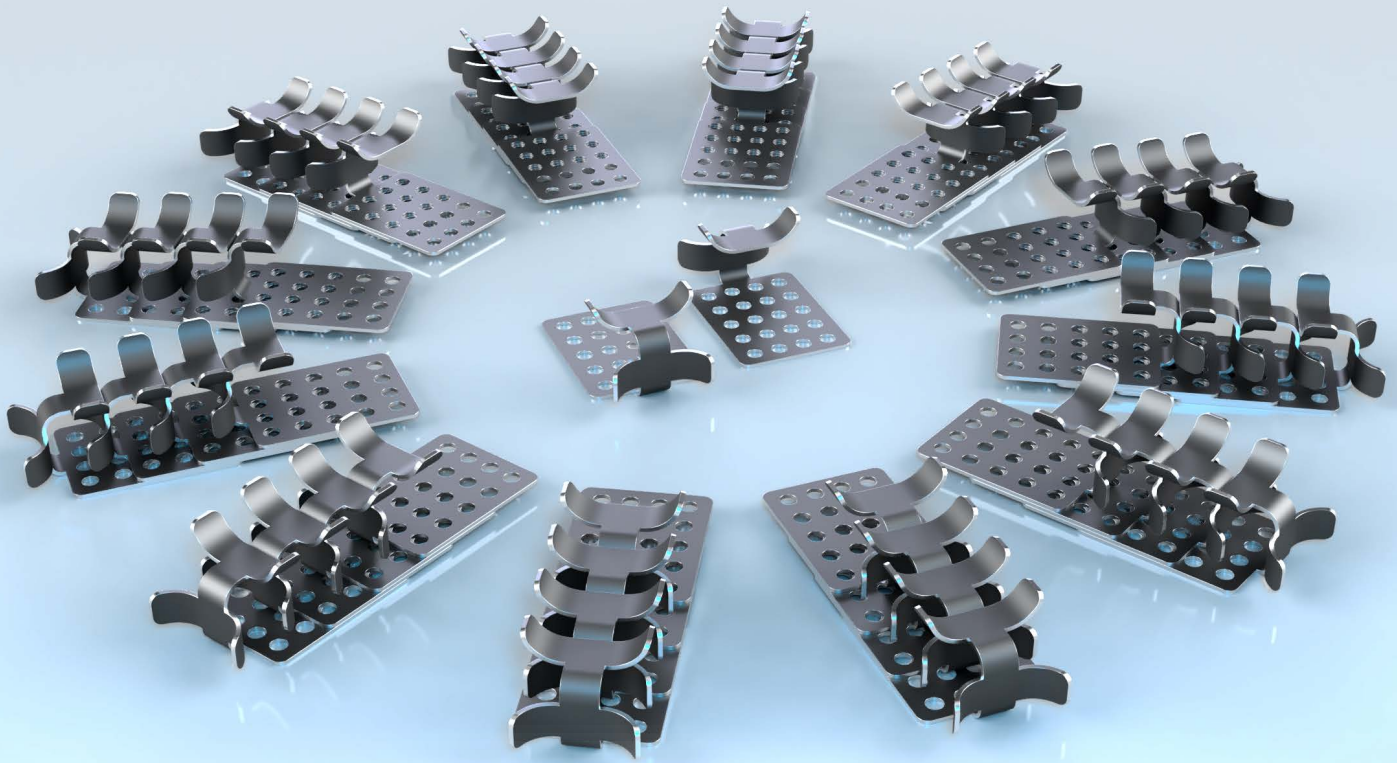


Roof Clips [SR-ROOF-CLIP]

For use with Warmup WSR Self-Regulating Cable

[Non-hazardous Locations]



Secure Cable Fastening

Designed specifically to hold Warmup's WSR Self-Regulating Cable firmly in place on roofs and gutter applications.

Versatile Installation Options

Can be installed using nails, screws, or a suitable outdoor adhesive for flexibility in different roof types e.g. shingle, metal seam roofs and gutters.

Durable Construction

Made from robust anodized aluminium to withstand outdoor conditions, ensuring long-term reliability in harsh weather.

cSAus Certified

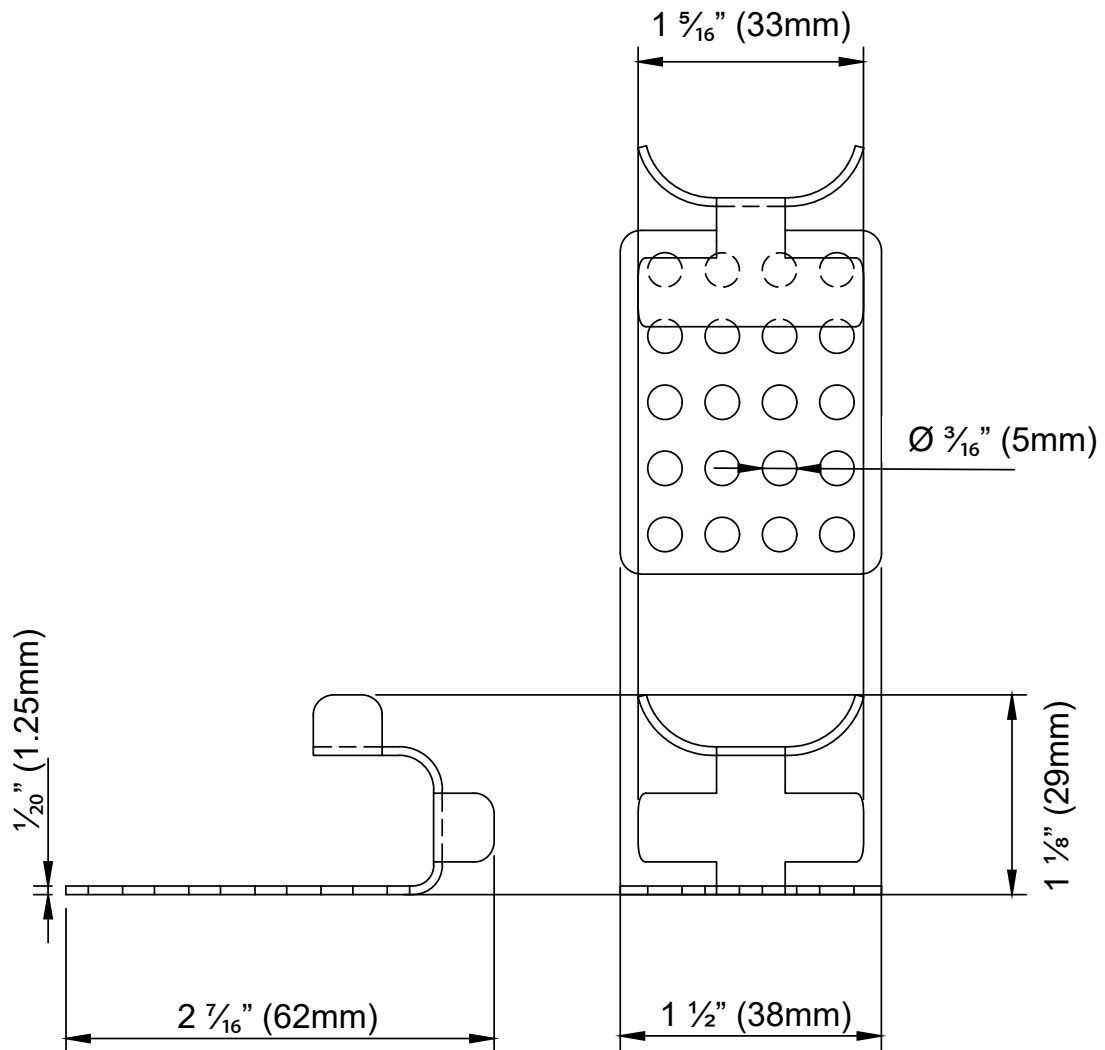
Guarantees compliance when used with WSR cable.

Overview

Warmup's Roof Clips are used for fast and secure installation of Warmup's WSR Self-Regulating Cable in roof & gutter applications. The Roof Clips are used to secure the cables to variety of roof & gutter types such as shingle and metal seam roofs and gutters. The clips can be installed using either nails/screws or a suitable outdoor adhesive. The SR-ROOF-CLIP pack contains 50 roof clip pieces.

The Roof Clips are cSAus approved for non-hazardous locations only when used with Warmup's WSR Self-Regulating Cable. To maintain cSAus compliance, only Warmup approved accessories may be used with WSR Self-Regulating Cable. Refer to the Part Numbers page for guidance.

Dimensions



Part Numbers

WSR Self-Regulating Cable

Model	Code	Voltage	Cable Length	Power Output <i>W/ft insulated pipe @50°F (10°C); W/ft in water @32°F (0°C)</i>
WSR-5W-1-250-CR	WSR-5/9W-1-250-CR	110-120 VAC	250 ft	5 W/ft (9 W/ft)
WSR-5W-1-500-CR	WSR-5/9W-1-500-CR	110-120 VAC	500 ft	5 W/ft (9 W/ft)
WSR-5W-1-1000-CR	WSR-5/9W-1-1000-CR	110-120 VAC	1000 ft	5 W/ft (9 W/ft)
WSR-5W-2-250-CR	WSR-5/9W-2-250-CR	208-277 VAC	250 ft	5 W/ft (9 W/ft)
WSR-5W-2-500-CR	WSR-5/9W-2-500-CR	208-277 VAC	500 ft	5 W/ft (9 W/ft)
WSR-5W-2-1000-CR	WSR-5/9W-2-1000-CR	208-277 VAC	1000 ft	5 W/ft (9 W/ft)
WSR-8W-1-250-CR	WSR-8/12W-1-250-CR	110-120 VAC	250 ft	8 W/ft (12 W/ft)
WSR-8W-1-500-CR	WSR-8/12W-1-500-CR	110-120 VAC	500 ft	8 W/ft (12 W/ft)
WSR-8W-1-1000-CR	WSR-8/12W-1-1000-CR	110-120 VAC	1000 ft	8 W/ft (12 W/ft)
WSR-8W-2-250-CR	WSR-8/12W-2-250-CR	208-277 VAC	250 ft	8 W/ft (12 W/ft)
WSR-8W-2-500-CR	WSR-8/12W-2-500-CR	208-277 VAC	500 ft	8 W/ft (12 W/ft)
WSR-8W-2-1000-CR	WSR-8/12W-2-1000-CR	208-277 VAC	1000 ft	8 W/ft (12 W/ft)
WSR-10W-1-250-CR	WSR-10/15W-1-250-CR	110-120 VAC	250 ft	10 W/ft (15 W/ft)
WSR-10W-1-500-CR	WSR-10/15W-1-500-CR	110-120 VAC	500 ft	10 W/ft (15 W/ft)
WSR-10W-1-1000-CR	WSR-10/15W-1-1000-CR	110-120 VAC	1000 ft	10 W/ft (15 W/ft)
WSR-10W-2-250-CR	WSR-10/15W-2-250-CR	208-277 VAC	250 ft	10 W/ft (15 W/ft)
WSR-10W-2-500-CR	WSR-10/15W-2-500-CR	208-277 VAC	500 ft	10 W/ft (15 W/ft)
WSR-10W-2-1000-CR	WSR-10/15W-2-1000-CR	208-277 VAC	1000 ft	10 W/ft (15 W/ft)

WSR Approved Accessories

Model	Description	Classification	Application
SR-SFIT-BOX-S	Power Connection Box for connecting WSR to supply	Non-Hazardous & Hazardous Locations <i>Ex eb IIC T3 Gb, Ex tb IIIC T200°C Db Class I, Zone 1, AEx eb IIC T3 Gb Class II, Zone 21, AEx tb IIIC T200°C Db Class I, Division 2, Groups A, B, C and D T3 Class II, Division 2, Groups F, G T3</i>	Pipe Tracing Roof & Gutter
SR-SFIT-SPL	Splice Connection kit for In-line Splice of WSR cable		
SR-SFIT-TEE	Tee Splice Connection kit for Tee Splice of WSR cable		
SR-END-KIT	End-Seal Termination kit for WSR cable termination		
SR-LENDCAP	Lighted End Kit for WSR cable termination, giving visual indicator when WSR cable is active. Certified for use at 120 or 240V AC only.	Non-Hazardous & Hazardous Locations <i>Class I, Division 2, Groups A, B, C and D; Class II, Division 2, Groups F and G; Class III; T5 or T6</i>	Pipe Tracing Roof & Gutter
SR-POWER-KIT	Power Connection Kit for WSR cable, incl. components for 1 power connection, 1 termination. Incl. 1 pipe standoff bracket.	Non-Hazardous Locations	Pipe Tracing Roof & Gutter
CRDS-15-GFCI	Plug-in, ground-fault-circuit interrupter [GFCI] power connection kit with 5-15P type plug for Warmup's WSR 120V Self-Regulating Cable	Non-Hazardous Locations	Pipe Tracing Roof & Gutter
SR-SPLICE-KIT	Splice/Tee Kit for WSR cable. Incl. components for 1 Splice and 1 End Seal, or 1 Tee Connection and 1 End Seal	Non-Hazardous Locations	Pipe Tracing Roof & Gutter
SR-ROOF-CLIP(50/BAG)	Metal single roof clips (50/BAG) to secure WSR cable	Non-Hazardous Locations	Roof & Gutter
SR-HANGER-KIT	Downspout Hanger for WSR cable	Non-Hazardous Locations	Roof & Gutter

Contact

Warmup is available 24/7/365 at (888) 927-6333
For quotes, layouts and specific technical information contact us at:

Warmup Inc

www.warmup.com
us@warmup.com
T: +1 (888) 927-6333

25 Francis J Clarke Cir, Bethel,
CT 06801

Warmup Canada

www.warmup.com
ca@warmup.com
T: 1+ (888) 592-7687

Please be advised Warmup Inc., provides these technical specifications and or instructions on a self help basis. We take every precaution to ensure they are accurate. Some of the products are sourced from manufacturers and we relay that information on to you. We do not have the technical specifications reviewed by an engineer and sometimes errors do happen. Our products are only reviewed with an ordinary level of care and when using said products in a situation that warrants additional care please be sure to conduct your own review. As such we strongly suggest before installing our products you have them reviewed by a professional engineer or qualified professional. We under no circumstances warrant our products for a particular use unless specifically agreed in writing.