

Heat Trace Controller [ODC-TRACE]

Heat Tracing Controller with built-in GFEP protection and 30A load switching capability



Quick Installation

Once the box is mounted to the wall, the installer can connect power lines and the low voltage temperature sensor wires into the marked terminals and the system is ready.

Flexible Sensor Integration

The Trace controller allows temperature input both from the provided temperature sensor (10 m. / 30 feet long) and also from a 3rd party aquastat.

Smart and Easy Control

The ODC-TRACE power boxes offer smart and easy control for heat tracing systems. With a backlit LCD screen providing a full interface and information to the status of the system.

Simple System Configuration

DIP Switches located on the controllers provide easy access to technician mode and to the system configuration settings.

Overview

The ODC-TRACE is a “Plug and Play” controller and a power panel for frost protection, heat tracing, ice and snow melting applications. When the temperature drops below the pre-defined adjustable set-points, it activates the contactor energizing the heating elements.

The Technician Settings mode allows installer or technician to adjust the parameters for customized installations using the electronic controller installed

in the front panel. The adjustable Hold-On timer, keeps the outputs to the heaters active to ensure complete freeze protection. The Hold-On (Time delay) has an adjustable range from 0 to 99 hours.

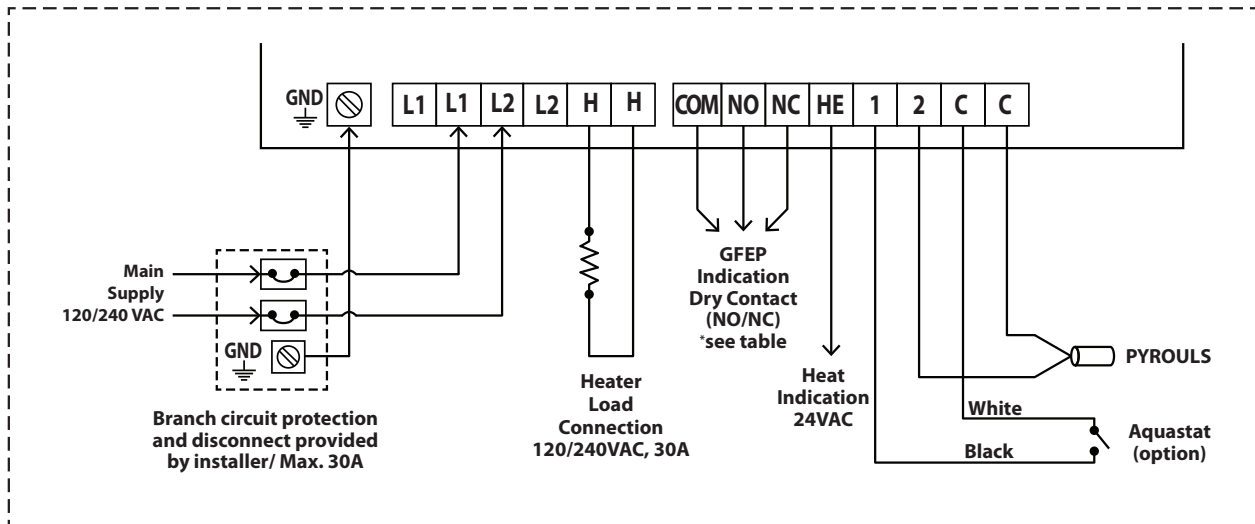
The built-in Ground Fault interruptor allows manual reset from the front panel. 3 LEDs visible through the transparent plastic cover provides information about the status of the system.

Adjustable Settings

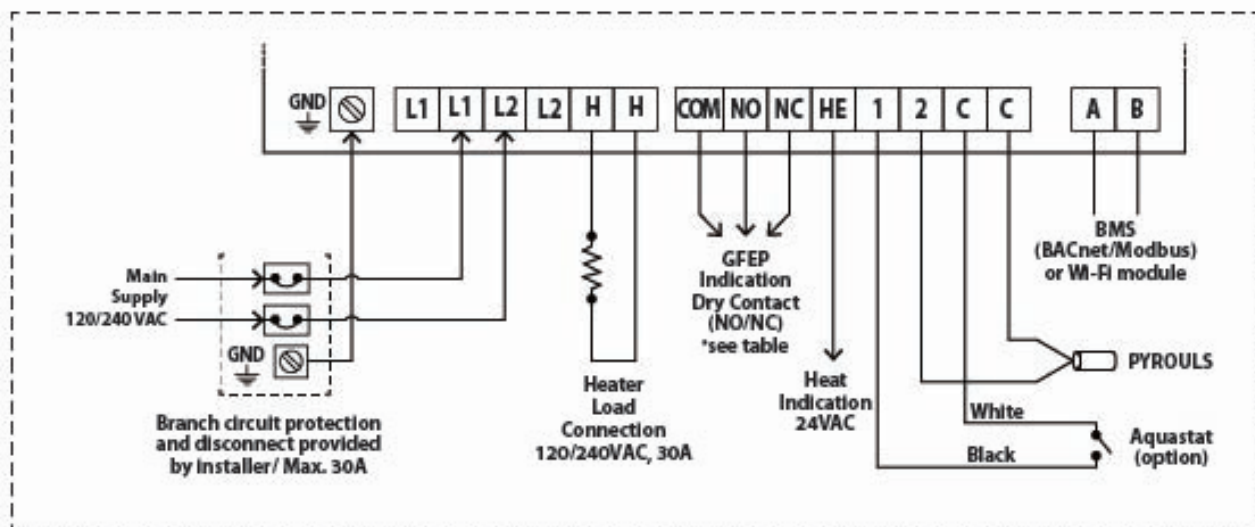
- | | |
|--|--|
| - Temperature set-point | - Enable/Disable 2nd temperature sensor logic (Aquistat) |
| - Lower ambient temperature limit to stop the heaters | - Commissioning / Test mode |
| - Time delay (Hold-on) before deactivating the heaters | - Restore defaults |
| - ON time for Manual mode | |

Wiring Diagrams

Typical wiring:



Wiring for special orders with systems connecting to a BMS or remote monitoring module:



Technical Specification

ODC-TRACE			
Product Code:	ODC-TRACE-1 (for 120V) / ODC-TRACE-2 (for 240V)	Contactor:	277 VAC, 30 Amps Max (Resistive), 50/60 Hz, 1-Pole
Enclosure:	IP67	High Voltage Terminal Blocks:	6 mm ² , 10 AWG (max)
Dimensions:	8x12x5 inch (20x30x13 cm)	Low Voltage Terminal Blocks:	4 mm ² , 12 AWG (max)
GFEP:	Trip current 30mA	Warranty:	1 year from initial purchase
GFEP Test:	Push button on front panel	ETL Listed:	ETL Listed CAN/CSA-C22.2 No. 14 + UL-508A

Contact

Warmup is available 24/7/365 at (888) 927-6333
For quotes, layouts and specific technical information contact us at:

Warmup Inc
www.warmup.com
us@warmup.com
T: +1 (888) 927-6333

Warmup Canada
www.warmup.com
ca@warmup.com
T: 1+ (888) 592-7687

25 Francis J Clarke Cir, Bethel,
CT 06801

Please be advised Warmup Inc., provides these technical specifications and or instructions on a self help basis. We take every precaution to ensure they are accurate. Some of the products are sourced from manufacturers and we relay that information on to you. We do not have the technical specifications reviewed by an engineer and sometimes errors do happen. Our products are only reviewed with an ordinary level of care and when using said products in a situation that warrants additional care please be sure to conduct your own review. As such we strongly suggest before installing our products you have them reviewed by a professional engineer or qualified professional. We under no circumstances warrant our products for a particular use unless specifically agreed in writing.