

**Warmup**

25A Francis J Clarke Circle  
Bethel, CT  
06801

**WARMUP INC. USA**

Contact Information

T: (888) 927 - 6333  
F: (888) 927 - 4721

[www.warmup.com](http://www.warmup.com)  
[ussales@warmup.com](mailto:ussales@warmup.com)

**WARMUP INC. CANADA**

Contact Information

T: (888) 592 - 7687  
F: (888) 927 - 4721

[www.warmup.ca](http://www.warmup.ca)  
[ca@warmup.com](mailto:ca@warmup.com)

**WARMUP INC. MEXICO**

Contact Information

T: +52 (55) 8114 9105  
F: +52 (55) 8114 0146

[www.warmup.com.mx](http://www.warmup.com.mx)  
[mexico@warmup.com](mailto:mexico@warmup.com)

# Contents.

## Guides.

- 03 Here For You
- 04 Product Selection Guide
- 06 Outdoor Controller Solutions

## Snow Melt.

- 10 Snow Melt Mats
- 12 Snow Melt Cables
- 14 Snow Melt Controllers

## Roof & Gutter.

- 22 Self-Regulating Cable
- 22 Constant Wattage Cable
- 24 Roof & Gutter Controllers

## Pipe Trace.

- 30 Self-Regulating Cable
- 30 Unjacketed Self-Regulating Cable
- 32 Pipe Trace Controllers

## Warmup.

- 36 Terms & Warranties
- 38 About Us
- 39 Why Warmup

# Here for you.



## Questions.

Call or email us - we want to be accessible when you need us the most.

By Phone: (888) 927 - 6333  
By Email: [ussales@warmup.com](mailto:ussales@warmup.com) or [us@warmup.com](mailto:us@warmup.com)

24 / 7 - Online: [www.warmup.com/warmupedia](http://www.warmup.com/warmupedia) / [www.youtube.com/@WarmupInc](https://www.youtube.com/@WarmupInc)

## Instant Pricing.

You can visit us at [www.warmup.com](http://www.warmup.com) for instant pricing. If you prefer to speak with a team member directly, you can call or email us using the contact information listed above.

Upon request, we are happy to supply a layout for your project, showing how to install the purchased product into your space.

## Orders.

Orders can be emailed to [us@warmup.com](mailto:us@warmup.com) or faxed to (888) 927 - 4721. We appreciate your understanding that orders must be received in writing.

If it's your first time ordering with Warmup, we will do our best to get you set up the same day and make sure your order is dispatched promptly.

## Shipping Policy.

Payment is due in full prior to credit approval.

Returns are allowed within 30 days with no penalty. After 30 days, returns are subject to a 20% restocking fee.

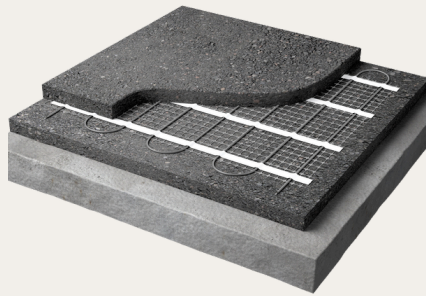
Click to view our full [Shipping Policy](#), or refer to page 36.

## Policies, Simplified.

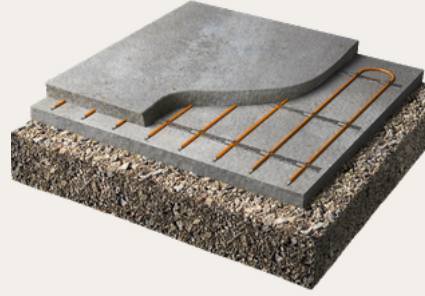
Our warranties are industry leading, including both manufacturer warranties and our SafetyNet Guarantee.

Click to view our complete general terms and [warranty information](#), or refer to page 37.

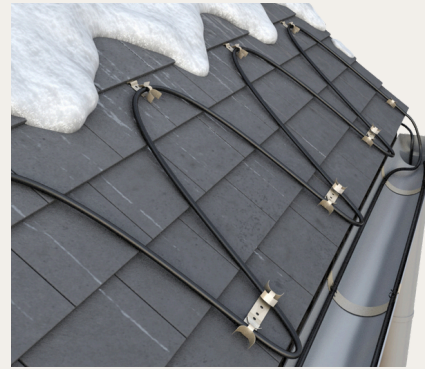
# Product Selection Guide.



**Snow Melt Mats**



**Snow Melt Cables**



**Roof & Gutter Cables**



**Pipe Trace Cables**

Key benefits
Best for
Suitable materials
Install location

Prevents snow & ice buildup
Easy to roll out for faster installation
Pre-spaced cable provides 50 W/sqft
Regularly shaped, rectangular areas
Driveways, walkways, & large paved areas
Pre-spaced mats can be easily rolled out in runs
Installation in concrete or asphalt, or under pavers
1.5 - 3 inches under finished surface

Prevents snow & ice buildup
Easily adaptable for curved shapes & tight spaces
Flexible cable spacing allows for precise control of heat output
Irregularly shaped or curved areas
Stairs, curved walkways, & small surface areas
Loose cables can be easily customized to fit layouts
Installation in concrete or asphalt, or under pavers
1.5 - 3 inches under finished surface

Keeps roofs & gutters free of ice & snow to eliminate ice dams
Adjusts heat output based on ambient temperature
Creates a drain path for water
Pitched roofs with gutters and downspouts
Flat roofs with roof drains
Residential, commercial, & industrial developments
Installation on all types of roofs, including rubber, metal, clay & asphalt shingles
Along the roof line, gutter, downspouts, & roof drains

Provides pipe freeze protection & temperature maintenance
Adjusts heat output based on ambient temperature
Certified for use in ordinary and hazardous locations
Pipes at risk of damage from freezing
Pipes that require a set temperature to be maintained
Residential, commercial, & industrial developments
PVC, black iron steel, stainless steel, & copper pipes
Separate linear runs or spiral along pipe lines

# Outdoor Controller Solutions.

CONTROLLER	APPLICATIONS			LOCATION		SENSORS		SENSORS						VOLTAGES & CONTACTORS		
	SNOW MELTING	ROOF & GUTTER DE-ICING	PIPE TRACE	MOUNTS INDOORS	MOUNTS OUTDOORS	SENSOR TYPE	WIFI APP ENABLED	PRO-A	PRO-G-H	PRO-R	AIRSS	GROUNDSS	GUTTERS	SUPPLY VOLTAGE	MAX LOAD CAPACITY	GFEP BUILT-IN
SNOPRO-100-W	✓	✓	✗	✓	✓	External	✓	✓	✓	✓	✗	✗	✗	120-240V (1-Phase) 240-600V (3-Phase)	100A (1-Phase) 150A (3-Phase)	✓
SNOPRO-100	✓	✓	✗	✓	✓	External	✗	✓	✓	✓	✗	✗	✗	120-240V (1-Phase) 240-600V (3-Phase)	100A (1-Phase) 150A (3-Phase)	✓
ODC-COMBOX-19	✓	✓	✗	✓	✗	External	✗	✗	✗	✗	✓	✓	✓	600V Max Per Pole 600V Max Per Pole 277V (Contactor 5)	200A (1-Phase) or 600A (3-Phase) & 30A (1-Phase)	✓
ODC-RESIBOX-19	✓	✓	✗	✓	✗	External	✗	✗	✗	✗	✓	✓	✓	277V Max Per Pole	120A (1-Phase)	✓
ODC-ASE-DS2	✓	✗	✗	✗	✓	Built-In	✗	✗	✗	✗	✗	✗	✗	100-277V	30A	✗
ODC-ASE-DS5	✓	✗	✗	✗	✓	Built-In	✗	✗	✗	✗	✗	✗	✗	100-277V	60A	✗
ODC-ASE-DS8	✓	✓	✗	✗	✓	Built-In	✗	✗	✗	✗	✗	✗	✗	100-277V	30A	✗
ODC-ASE-DS9	✓	✓	✗	✗	✓	Built-In	✗	✗	✗	✗	✗	✗	✗	100-277V	60A	✗
ODC-TRACE-1	✗	✗	✓	✓	✓	External (Included)	✗	✗	✗	✗	✗	✗	✗	120V	30A	✓
ODC-TRACE-2	✗	✗	✓	✓	✓	External (Included)	✗	✗	✗	✗	✗	✗	✗	208-277V	30A	✓
TRF115-005	✗	✗	✓	✓	✓	Built-In	✗	✗	✗	✗	✗	✗	✗	100-277V	16A @ 240V 22A @ 277V	✗



*Snow Melt.*

# Snow Melt Mats.

HEATED MAT SYSTEM

[INSTALLATION  
MANUAL](#)



[TECHNICAL  
SPECIFICATIONS](#)



Warmup's Snow Melting Mats are specially designed for easy installation in driveways, walkways, and more for convenient snow management and reduced weather-related risks.

Snow Melting Systems can be used with coverings such as pavers and related masonry, concrete pours, and asphalt with a base consisting of crushed gravel or sand. When conditions indicate the presence of snow or ice, the system will automatically activate and begin to heat the slab. Most of the melt will evaporate, leaving the surface clear of snow and ice and reducing the risk of refreezing.



Easy roll-out installation



Minimize weather-related risks of injury



Eliminate manual snow management

## TECHNICAL SPECIFICATIONS

**Mat Width:** 2ft or 3ft wide

**Heat Output:** ± 50 W/sqft

**Available Voltages:** 208V - 240V

**Cold Tail Length:** 16.4ft (610cm)

**Compatible Coverings:** Pavers, masonry, concrete pours, & asphalt



### 240V, 2FT WIDTH MATS

	PRODUCT CODE	MAT SIZE	AMPS	RESISTANCE (Ω)	WATTAGE	SQUARE FOOT COVERAGE	MSRP
240 VOLT	WSMM-240/500	2' x 5'	2.1	115.2	500	10	\$261.45
	WSMM-240/1000	2' x 10'	4.2	57.6	1000	20	\$355.66
	WSMM-240/1500	2' x 15'	6.3	38.4	1500	30	\$472.09
	WSMM-240/2000	2' x 20'	8.3	28.8	2000	40	\$558.89
	WSMM-240/2500	2' x 25'	10.4	23.0	2500	50	\$624.52
	WSMM-240/3000	2' x 30'	12.5	19.2	3000	60	\$783.29
	WSMM-240/3500	2' x 35'	14.6	16.5	3500	70	\$865.85
	WSMM-240/4000	2' x 40'	16.7	14.4	4000	80	\$950.53
	WSMM-240/4500	2' x 45'	18.8	12.8	4500	90	\$1,026.75
	WSMM-240/5000	2' x 50'	20.8	11.5	5000	100	\$1,130.48
	WSMM-240/6000	2' x 60'	25.0	9.6	6000	120	\$1,355.94

### 240V, 3FT WIDTH MATS

	PRODUCT CODE	MAT SIZE	AMPS	RESISTANCE (Ω)	WATTAGE	SQUARE FOOT COVERAGE	MSRP
240 VOLT	WSMM-240/3X10	3' x 10'	6.3	38.4	1500	30	\$476.33
	WSMM-240/3X20	3' x 20'	12.5	19.2	3000	60	\$764.24
	WSMM-240/3X25	3' x 25'	15.6	15.6	3750	75	\$872.20
	WSMM-240/3X30	3' x 30'	18.8	12.8	4500	90	\$1,048.97
	WSMM-240/3X40	3' x 40'	25.0	9.6	6000	120	\$1,310.42

\*208V, 277V, & 480V Snow Melt Mats are available for special order in the same size selections as the 240V Mats. Lead time of special order products is approximately 12-16 weeks.

# Snow Melt Cables.

HEATED CABLE SYSTEM

[INSTALLATION MANUAL](#)



[TECHNICAL SPECIFICATIONS](#)



Snow Melt Cables are ideal for spaces requiring customized cable layouts, protecting areas that are otherwise more difficult to manage from winter-related damage and hazards.

The cables can be easily installed under pavers, asphalt, or concrete to ensure that a snow and ice-free surface will be maintained. The system can be connected to moisture and temperature sensing control for automated activation.



Adapts easily to irregular spaces



Customized cable spacing design



Control over wattage output

### TECHNICAL SPECIFICATIONS

**Cable Length:** Range from 84ft (25m) to 500ft (152m)

**Heat Output:** ± 50 W/sqft

**Available Voltages:** 208V - 240V

**Cold Tail Length:** 16.4ft (610cm)

**Compatible Coverings:** Pavers, masonry, concrete pours, & asphalt



### 240V CABLES

	PRODUCT CODE	CABLE SIZE (FT)	AMPS	RESISTANCE (Ω)	WATTAGE	SQUARE FOOT COVERAGE			MSRP
						3"	4"	5"	
240 VOLT	WSM-240/1000	84	4.2	57.1	1000	20	27	34	\$287.91
	WSM-240/2000	168	8.3	28.9	2000	43	57	72	\$442.45
	WSM-240/2500	209	10.4	23.1	2500	51	67	84	\$568.41
	WSM-240/3000	251	12.5	19.2	3000	62	84	104	\$611.81
	WSM-240/4000	330	16.7	14.2	4000	85	110	135	\$808.69
	WSM-240/5000	420	20.8	11.5	5000	100	140	170	\$981.23
	WSM-240/6000	500	25.0	9.6	6000	122	181	200	\$1,161.17

\*208V, 277V, & 480V Snow Melt Mats are available for special order in the same size selections as the 240V Mats. Lead time of special order products is approximately 12-16 weeks.

# SNOPRO Series.

## WIFI-CAPABLE SNOW & ICE MELT CONTROLLER

The SNOPRO-100 is an all-in-one snow and ice melt controller for projects of all scales.

Compatible with the WSM Snowmelting App, it monitors snow and ice probability within a given location using weather forecasting, activating automatically when it detects that snowfall is likely.

[PRODUCT LITERATURE](#)



# DS Series.

## AUTOMATIC SNOW & ICE MELT CONTROLLER

By combining the controller and sensor in one device, the DS Controllers are a simple addition to a Snow Melt System.

The DS Controllers are best for smaller projects up to 280 sqft. These intuitive outdoor controllers will automatically activate based on readings from the built-in temperature and moisture sensor to melt snow as it begins to accumulate.



# ComBox-600.

## MULTI-ZONE SNOW MELT CONTROLLER

The ComBox-600 is ideal for larger projects over 1,000 sqft and can be wired in 3-phase.

With built-in relay contactors and GFEP protection, this panel can switch up to four times the supplied voltage. This means that you can create up to four zones but power them one at a time, reducing the amount of amperage needed to run the system.



## SNOPRO-100 SERIES CONTROLLERS & ACCESSORIES

PRODUCT CODE	DESCRIPTION	MSRP
SNOPRO-100	Warmup's Snow & Ice Melt All-In-One Control Unit, 2 x 50 amp contactors with integrated GFEP, 208V-600V, can be used with external sensors.	\$3,016.73
SNOPRO-100-W	Warmup's Snow & Ice Melt All-In-One Control Unit, 2 x 50 amp contactors with integrated GFEP, 208V-600V, can be used with external sensors, compatible with the Warmup WSM Snow Melting App.	\$3,800.02
ODC-PRO-A	24V aerial temperature and moisture sensor for SNOPRO and other controllers.	\$1,132.60
ODC-PRO-G-H	Surface-mounted snow and ice sensor for SNOPRO controller. Detects temperature and moisture and triggers below 38F. Housing included.	\$2,805.03
ODC-SNOPRO-EXT	WiFi module to convert non-WiFi SNOPRO-100 to WiFi. Special order only.	\$2,000.00
ACC-PRO-REM	A remote control and status display for the SNOPRO-100 or satellite, controls at a location convenient to personnel capable of observing snow melting system operation.	\$677.44
GF-PRO	Snow & ice controller, (1) 30A contactor with GFEP in a NEMA 4X enclosure, UL listed, use with external sensors.	\$1,746.50

## DS SERIES CONTROLLERS & ACCESSORIES

PRODUCT CODE	DESCRIPTION	MSRP
ODC-ASE-DS2C	Wall-mounted controller for snow melting with built-in sensor, 1 x 30 amp contactor, 240V.	\$791.76
ODC-ASE-DS5C	Wall-mounted controller for snow melting with built-in sensor, 2 x 30 amp contactors, 240V.	\$917.72
ODC-CDP-2	Indoor monitoring and control for DS Series. Self-powered, fits any standard single-gang or multi-gang electrical enclosure.	\$316.49
ODC-CS-50	50ft connection kit between DS Controller and CDP-2 remote.	\$135.49

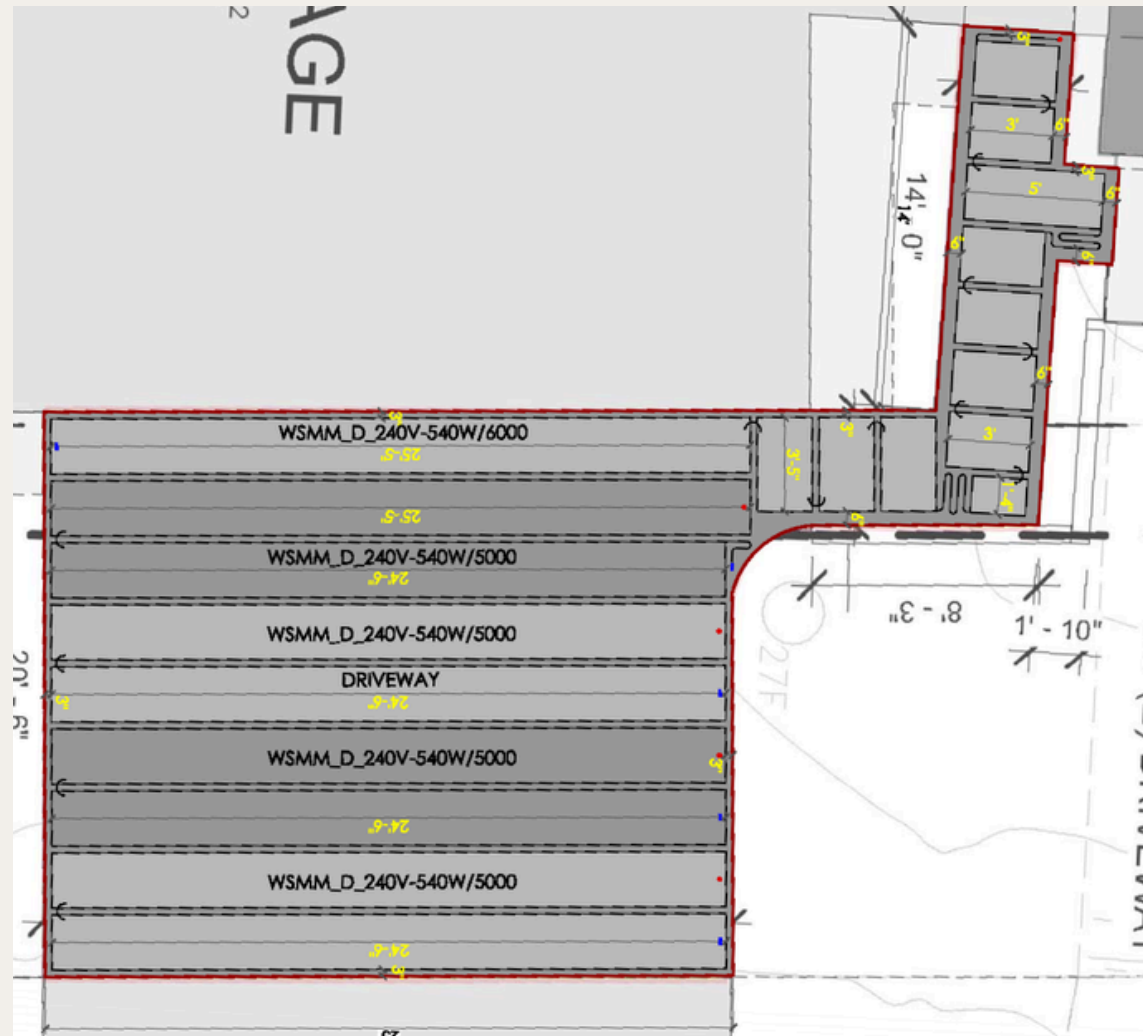
## COMBOX/RESIBOX SERIES CONTROLLERS & ACCESSORIES

PRODUCT CODE	DESCRIPTION	MSRP
ODC-RESIBOX3-19	Outdoor controller with 4 x 30A/2-pole contactors, allowing for a total load of 120A with a minimum power supply of 36A. Comes in LED enclosure with GFEP protection, built-in digital controller, and ground temperature sensor. AirSense sold separately.	\$4,988.71
ODC-COMBOX600-19	Outdoor controller with 4 x 50A/3-pole contactors, allowing for a total load of 600A with a minimum power supply of 150A (3-phase power). 230A max load at 240V supply. Comes in LED enclosure with GFEP protection, built-in digital controller, and ground temperature sensor. 3-phase power and any transformers are the responsibility of the electrical contractor. AirSense sold separately.	\$6,779.69
ODC-AIRSS-19	Outdoor temperature and moisture sensor for use with ComBox and ResiBox.	\$938.89
ODC-AIRSS-B	Mounting bracket for AirSense Sensor.	\$238.16
ODC-GROUNDSS-19	Outdoor pavement sensor for use with ComBox and ResiBox.	\$2,350.00

## INSTALLATION ACCESSORIES

PRODUCT CODE	DESCRIPTION	MSRP
WSM-NMP	Branded Name Plate for use with Warmup Snow Melt Heater installations (NEC426-13).	\$47.70
DCT-SBOX	Dual Cable Tester, tests 2 load-neutral-ground heating cable connections simultaneously.	\$46.64
ACC-DGMTR	Alligator Tester, digital multimeter constantly monitors cable resistance.	\$25.44
ACC-WATCHDOG	Watchdog Tester, sounds an alarm when connected to a broken heating cable.	\$25.44
DCM-FB-82	Metal Fixing Bands, sold in 82 ft spool.	\$117.66
SR-ZT-100	Bag of 100 Heavy Duty Zip Ties, 7" long, 50lbs load bearing capacity.	\$22.26
RK-EO	Repair Kit for Warmup Outdoor Heating Cables.	\$21.20

LAYOUT EXAMPLE / DRIVEWAY



PRODUCT COST		COST TO RUN	
<b>\$12,694.61</b>		PER HOUR	<b>\$04.42</b>
		PER MONTH	<b>\$530.40</b>

\*Cost based on National Average kW/hr Energy Cost of \$0.17 for U.S. Monthly estimated cost based on 4 hours of run time per day.

PRODUCTS USED			SPECIFICATIONS	
Product Code	QTY	USD	Total Area	620 SQFT
WSMM-240/6000	1	\$1,355.94	Surface Area to be Heated	520 SQFT
WSMM-240/5000	4	\$4,521.92	Voltage	240V
SNOPRO-100-W	1	\$3,800.02	Amperage	108.2A
SNOPRO-100	1	\$3,016.73	Total BTU Equivalent	88,715



LAYOUT EXAMPLE / STAIRS



PRODUCT COST		COST TO RUN	
<b>\$1,772.99</b>		PER HOUR	<b>\$00.85</b>
			PER MONTH <b>\$102.00</b>

\*Cost based on National Average kW/hr Energy Cost of \$0.17 for U.S. Monthly estimated cost based on 4 hours of run time per day.

PRODUCTS USED			SPECIFICATIONS	
Product Code	QTY	USD	Total Area	135 SQFT
WSM-240/5000	1	\$981.23	Surface Area to be Heated	100 SQFT
ODC-ASE-DS2C	1	\$791.76	Voltage	240V
			Amperage	20.8A
			Total BTU Equivalent	17,060



*Roof & Gutter De-Icing.*

# Self-Regulating Cable.

FOR ROOF & GUTTER DE-ICING

[INSTALLATION MANUAL](#)



[TECHNICAL SPECIFICATIONS](#)



The WSR Cable is a versatile, safe solution for all roof types, such as rubber, metal, clay, and asphalt shingles.

It features an advanced PTC core that adjusts heat output based on temperature, eliminating the need for a thermostat. It is available in various spool sizes, can be cut to length on-site for a precise fit, won't overheat or burn out even when overlapped, and is suitable for both hazardous and non-hazardous environments. It ensures a reliable and efficient performance for diverse roofing applications.



Automatically adjusts heat output



Protects against leaks & roof damage



Designed for exposed areas

## TECHNICAL SPECIFICATIONS

**Material:** Industrial Grade, 16 AWG Buss Wire

**Heat Output:** Up to 9W/ft or 12W/ft

**Available Voltages:** 120V, 208V - 277V

**Circuit Length:** Up to 470ft (maximum)

**Compatible Roof Types:** All roof types (rubber, metal, clay, asphalt, etc.)

## SR Kits.

When using our Self-Regulating Cable Kits, no control device is necessary; the cable automatically adjusts its power output to compensate for temperature changes. The kits are offered in lengths from 6 to 100ft and include a factory sealed 30in 3-prong plug power connection and an end termination.

## WRGH Kits.

The Warmup Constant Wattage Cable Kit is offered in sizes from 30 to 240ft (from 150W to 1,200W) and is supplied with roof-fixing clips. They are pre-assembled with a 3-prong plug to provide a simple solution to resolve ice dams and snow accumulation on roof lines for residential homes.

## SELF-REGULATING CABLE SPOOLS

	PRODUCT CODE	OUTPUT @ 32F	DESCRIPTION	MSRP
120V	WSR-5/9W-1-250-CR	9 W	Self-Regulating Cable, 120V, 5/9 Watts per linear foot. Sold in 250-foot spools.	\$2,045.02
	WSR-5/9W-1-500-CR	9 W	Self-Regulating Cable, 120V, 5/9 Watts per linear foot. Sold in 500-foot spools.	\$4,087.93
	WSR-5/9W-1-1000-CR	9 W	Self-Regulating Cable, 120V, 5/9 Watts per linear foot. Sold in 1000-foot spools.	\$8,173.74
	WSR-8/12W-1-250-CR	12 W	Self-Regulating Cable, 120V, 8/12 Watts per linear foot. Sold in 250-foot spools.	\$2,045.02
	WSR-8/12W-1-500-CR	12 W	Self-Regulating Cable, 120V, 8/12 Watts per linear foot. Sold in 500-foot spools.	\$4,087.93
	WSR-8/12W-1-1000-CR	12 W	Self-Regulating Cable, 120V, 8/12 Watts per linear foot. Sold in 1000-foot spools.	\$8,173.74
208-277V	WSR-5/9W-2-250-CR	9 W	Self-Regulating Cable, 208-277V, 5/9 Watts per linear foot. Sold in 250-foot spools.	\$2,045.02
	WSR-5/9W-2-500-CR	9 W	Self-Regulating Cable, 208-277V, 5/9 Watts per linear foot. Sold in 500-foot spools.	\$4,087.93
	WSR-5/9W-2-1000-CR	9 W	Self-Regulating Cable, 208-277V, 5/9 Watts per linear foot. Sold in 1000-foot spools.	\$8,173.74
	WSR-8/12W-2-250-CR	12 W	Self-Regulating Cable, 208-277V, 8/12 Watts per linear foot. Sold in 250-foot spools.	\$2,045.02
	WSR-8/12W-2-500-CR	12 W	Self-Regulating Cable, 208-277V, 8/12 Watts per linear foot. Sold in 500-foot spools.	\$4,087.93
	WSR-8/12W-2-1000-CR	12 W	Self-Regulating Cable, 208-277V, 8/12 Watts per linear foot. Sold in 1000-foot spools.	\$8,173.74

## SELF-REGULATING CABLE KITS

PRODUCT CODE	DESCRIPTION	MSRP
SR-K6	Self-Regulating Cable Kit, 120V, 6ft long pre-terminated with 3-prong plug.	\$99.50
SR-K12	Self-Regulating Cable Kit, 120V, 12ft long pre-terminated with 3-prong plug.	\$130.20
SR-K18	Self-Regulating Cable Kit, 120V, 18ft long pre-terminated with 3-prong plug.	\$167.24
SR-K24	Self-Regulating Cable Kit, 120V, 24ft long pre-terminated with 3-prong plug.	\$203.23
SR-K50	Self-Regulating Cable Kit, 120V, 50ft long pre-terminated with 3-prong plug.	\$341.90
SR-K75	Self-Regulating Cable Kit, 120V, 75ft long pre-terminated with 3-prong plug.	\$456.21
SR-K100	Self-Regulating Cable Kit, 120V, 100ft long pre-terminated with 3-prong plug.	\$582.18

## CONSTANT WATTAGE CABLE KITS

PRODUCT CODE	DESCRIPTION	MSRP
WRGH-120-150	30ft Roof & Gutter Constant Wattage Kit with plug. 120V, 5W/lin.ft. - 150 Watts. Includes roof clips and spacers.	\$104.94
WRGH-120-300	60ft Roof & Gutter Constant Wattage Kit with plug. 120V, 5W/lin.ft. - 300 Watts. Includes roof clips and spacers.	\$135.68
WRGH-120-400	80ft Roof & Gutter Constant Wattage Kit with plug. 120V, 5W/lin.ft. - 400 Watts. Includes roof clips and spacers.	\$173.84
WRGH-120-500	100ft Roof & Gutter Constant Wattage Kit with plug. 120V, 5W/lin.ft. - 500 Watts. Includes roof clips and spacers.	\$195.04
WRGH-120-600	120ft Roof & Gutter Constant Wattage Kit with plug. 120V, 5W/lin.ft. - 600 Watts. Includes roof clips and spacers.	\$242.74
WRGH-120-800	160ft Roof & Gutter Constant Wattage Kit with plug. 120V, 5W/lin.ft. - 800 Watts. Includes roof clips and spacers.	\$285.14
WRGH-120-1000	200ft Roof & Gutter Constant Wattage Kit with plug. 120V, 5W/lin.ft. - 1,000 Watts. Includes roof clips and spacers.	\$340.26
WRGH-120-1200	240ft Roof & Gutter Constant Wattage Kit with plug. 120V, 5W/lin.ft. - 1,200 Watts. Includes roof clips and spacers.	\$369.94
ODC-WRS-2	Temperature and moisture controller for Warmup WRGH Roof & Gutter De-Icing Kits.	\$145.22

# SNOPRO Series.

WIFI-CAPABLE SNOW & ICE MELT CONTROLLER

[PRODUCT LITERATURE](#)



The SNOPRO snow and ice melt control unit is an ideal solution for de-icing roofs, gutters, and downspouts.

This comprehensive controller is ideal for both residential and commercial roof and gutter projects. The SNOPRO-100 pairs with external sensors to activate the system automatically based on temperature and moisture levels. Simply and smoothly run your roof and gutter protection system using this advanced controller.



Automatic snow & ice melting control



Multiple sensor capability



Satellite contactor interface for larger systems

# DS Series.

AUTOMATIC SNOW & ICE MELT CONTROLLER

The DS Controllers are a simple all-in-one solution for gutter, downspout, and roof de-icing.

The tightly sealed, low voltage, remote-mount precipitation sensor allows the user to install the small sensor head in a downspout, the bottom of a gutter, or at the end of an antenna boom, up to 10' away, while keeping the main controller in a more convenient or protected location.



"All-in-one" wall mounted controller



Adjustable temperature trigger



Automatic activation based on sensor readings

## SNOPRO-100 SERIES CONTROLLERS & ACCESSORIES

PRODUCT CODE	DESCRIPTION	MSRP
SNOPRO-100	Warmup's Snow & Ice Melt All-In-One Control Unit, 2 x 50 amp contactors with integrated GFEP, 208V-600V, can be used with external sensors.	\$3,016.73
ODC-PRO-R	Gutter sensor for SNOPRO panel, measures temperature and moisture, active below 38F.	\$1,148.47
ACC-PRO-REM	A remote control and status display for the SNOPRO-100 or satellite, controls at a location convenient to personnel capable of observing system operation.	\$677.44
GF-PRO	Snow & ice controller, (1) 30A contactor with GFEP in a NEMA 4X enclosure, UL listed, use with external sensors.	\$1,746.50

## DS SERIES CONTROLLERS & ACCESSORIES

PRODUCT CODE	DESCRIPTION	MSRP
ODC-ASE-DS8C	Wall-mounted controller for ice melting with remote gutter sensor, 1 x 30 amp contactor, 120V-277V.	\$919.84
ODC-ASE-DS9C	Wall-mounted controller for ice melting with remote gutter sensor, 2 x 30 amp contactors, 120V-277V.	\$974.88
ODC-CDP-2	Indoor monitoring and control for DS Series. Self-powered, fits any standard single-gang or multi-gang electrical enclosure.	\$316.49
ODC-CS-50	50ft connection kit between DS Controller and CDP-2 remote.	\$135.49

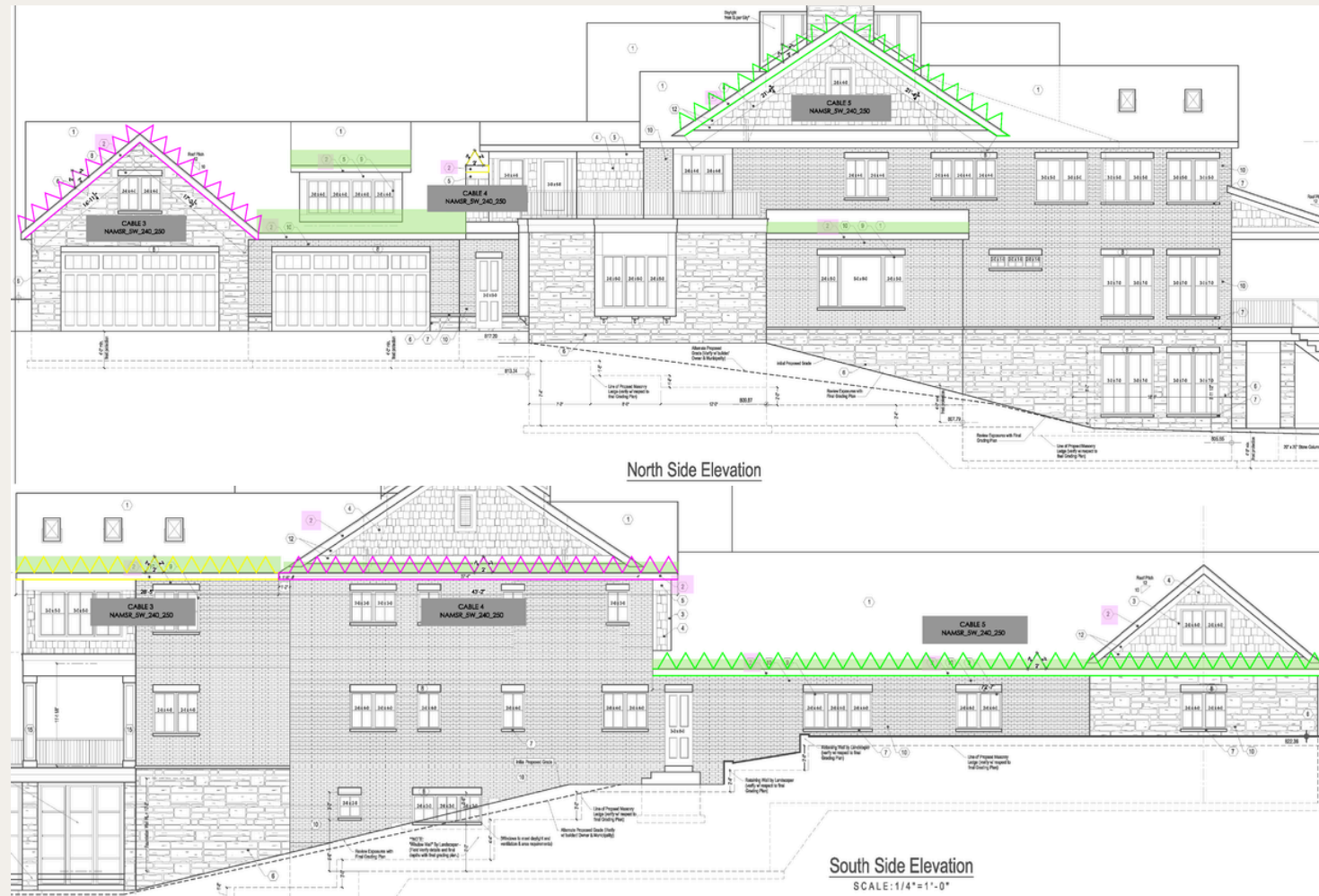
## COMBOX/RESIBOX SERIES CONTROLLERS & ACCESSORIES

PRODUCT CODE	DESCRIPTION	MSRP
ODC-RESIBOX3-19	Outdoor controller with 4 x 30A/2-pole contactors, allowing for a total load of 120A with a minimum power supply of 36A. Comes in LED enclosure with GFEP protection, built-in digital controller, and ground temperature sensor. AirSense sold separately.	\$4,988.71
ODC-COMBOX600-19	Outdoor controller with 4 x 50A/3-pole contactors, allowing for a total load of 600A with a minimum power supply of 150A (3-phase power). 230A max load at 240V supply. Comes in LED enclosure with GFEP protection, built-in digital controller, and ground temperature sensor. 3-phase power and any transformers are the responsibility of the Electrical Contractor. AirSense sold separately.	\$6,779.69
ODC-AIRSS-19	Outdoor temperature and moisture sensor for use with ComBox and ResiBox.	\$938.89
ODC-AIRSS-B	Mounting bracket for AirSense Sensor.	\$238.16
ODC-GUTTERS-19	Outdoor gutter sensor for use with ComBox and ResiBox.	\$1,100.00

## INSTALLATION ACCESSORIES

PRODUCT CODE	DESCRIPTION	MSRP
SR-POWER-KIT	Power connection kit for Self-Regulating Cable, includes pipe mounting bracket and an end kit.	\$74.55
SR-END-KIT	End seal kit for for Self-Regulating Cable.	\$27.30
SR-SFIT-SPL	In-line splicing connection box for fast and weather-tight connections.	\$77.70
SR-SFIT-TEE	3-way T-splice connection box for fast and weather-tight connections.	\$84.00
SR-SPLICE-KIT	Splice/tee kit for Self-Regulating Cable, includes (2) end caps.	\$49.35
SR-HANGER-KIT	Downspout hanger for Self-Regulating Cable.	\$24.15
SR-ROOF-CLIP	Metal single roof clips, 50 per package. Secure to roof with screws or Everseal SB-170 adhesive or similar.	\$126.00
WRGH-SB-170	Versatile adhesive to apply the Warmup Roof-Clip on a variety of roof structures, water and weather proof with a strength of 2,000 psi.	\$39.22
CRDS-15-GFI	6ft lead with GFCI 3-prong molded plug, NEMA 5-15p, 15A rated, 14/3 Ga, 120V, max cable length 125ft.	\$100.80

## LAYOUT EXAMPLE / RESIDENTIAL



PRODUCT COST		COST TO RUN	
<b>\$8,600.93</b>		PER HOUR	<b>\$00.64</b>
		PER MONTH	<b>\$76.80</b>

\*Cost based on National Average kW/hr Energy Cost of \$0.17 for U.S. Monthly estimated cost based on 4 hours of run time per day.

PRODUCTS USED			SPECIFICATIONS	
Product Code	QTY	USD	Total Heated Area	680 L.FT
WSR-5/9W-2-500-CR	1	\$4,087.93	Voltage	240V
WSR-5/9W-2-250-CR	1	\$2,045.02	Amperage	14.2A
ODC-ASE-DS9C	1	\$974.88	Total BTU Equivalent	11,619
Power Kits, End Kits, Roof Clips, Etc.	-	\$1,493.10		

## LAYOUT EXAMPLE / COMMERCIAL



PRODUCT COST		COST TO RUN	
<b>\$11,908.62</b>		PER HOUR	<b>\$01.53</b>
		PER MONTH	<b>\$183.60</b>

\*Cost based on National Average kW/hr Energy Cost of \$0.17 for U.S. Monthly estimated cost based on 4 hours of run time per day.

PRODUCTS USED			SPECIFICATIONS	
Product Code	QTY	USD	Total Heated Area	200 L.FT
WSR-5/9W-2-1000-CR	1	\$8,173.74	Voltage	240V
ODC-ASE-DS9C	2	\$1,949.76	Amperage	34.1A
Power Kits, End Kits, Roof Clips, Etc.	-	\$1,785.12	Total BTU Equivalent	27,945



*Pipe Freeze Protection.*

# Self-Regulating Cable.

FOR PIPE FREEZE PROTECTION

[INSTALLATION MANUAL](#)



[TECHNICAL SPECIFICATIONS](#)



Self-Regulating Cables are well-suited to prevent liquids in metal and plastic pipes from freezing.

The cable is regularly used with various types of pipes. It is approved for dry and wet locations due to its self-regulating polymer core that varies its heat output, saving energy and eliminating hot spots. It is easy to install since it can be cut to length and can be overlapped without overheating the cable.



Automatically adjusts heat output



Freeze protection & temperature maintenance



Suitable for ordinary & hazardous areas

## TECHNICAL SPECIFICATIONS

**Available Voltages:** 120V, 208V - 277V

**Max. Maintenance Temp:** 150°F

**Min. Installation Temp:** -76°F

**Compatible Pipe Surfaces:** Metal & Plastic

## HAZARDOUS APPROVALS

Class I, Division 2, Groups A, B, C, & D, T5/T6

Class II, Division 2, Groups F & G, T5/T6

Class I, Zone 1 AEx eb IIC T5/T6 Gb

Class II, Zone 21 AEx tb IIIC T212°F/T185°F Db

## Unjacketed Self-Regulating Cable.

The cables are comprised of the cable in spool format as well as kits (including a connection plug-in kit with end seal and labels). Since the cable range offers 5W/linear foot of heat output, it provides better results and better protection against frost, all with less cable required.

## SELF-REGULATING CABLE

	PRODUCT CODE	OUTPUT @ 32F	DESCRIPTION	MSRP
120V	WSR-5/9W-1-250-CR	5 W	Self-Regulating Cable, 120V, 5/9 Watts per linear foot. Sold in 250-foot spools.	\$2,045.02
	WSR-5/9W-1-500-CR	5 W	Self-Regulating Cable, 120V, 5/9 Watts per linear foot. Sold in 500-foot spools.	\$4,087.93
	WSR-5/9W-1-1000-CR	5 W	Self-Regulating Cable, 120V, 5/9 Watts per linear foot. Sold in 1000-foot spools.	\$8,173.74
	WSR-8/12W-1-250-CR	8 W	Self-Regulating Cable, 120V, 8/12 Watts per linear foot. Sold in 250-foot spools.	\$2,045.02
	WSR-8/12W-1-500-CR	8 W	Self-Regulating Cable, 120V, 8/12 Watts per linear foot. Sold in 500-foot spools.	\$4,087.93
	WSR-8/12W-1-1000-CR	8 W	Self-Regulating Cable, 120V, 8/12 Watts per linear foot. Sold in 1000-foot spools.	\$8,173.74
	WSR-10/15W-1-250-CR	10 W	Self-Regulating Cable, 120V, 10/15 Watts per linear foot. Sold in 250-foot spools.	\$2,045.02
	WSR-10/15W-1-500-CR	10 W	Self-Regulating Cable, 120V, 10/15 Watts per linear foot. Sold in 500-foot spools.	\$4,087.93
	WSR-10/15W-1-1000-CR	10 W	Self-Regulating Cable, 120V, 10/15 Watts per linear foot. Sold in 1000-foot spools.	\$8,173.74
208-277V	WSR-5/9W-2-250-CR	5 W	Self-Regulating Cable, 208-277V, 5/9 Watts per linear foot. Sold in 250-foot spools.	\$2,045.02
	WSR-5/9W-2-500-CR	5 W	Self-Regulating Cable, 208-277V, 5/9 Watts per linear foot. Sold in 500-foot spools.	\$4,087.93
	WSR-5/9W-2-1000-CR	5 W	Self-Regulating Cable, 208-277V, 5/9 Watts per linear foot. Sold in 1000-foot spools.	\$8,173.74
	WSR-8/12W-2-250-CR	8 W	Self-Regulating Cable, 208-277V, 8/12 Watts per linear foot. Sold in 250-foot spools.	\$2,045.02
	WSR-8/12W-2-500-CR	8 W	Self-Regulating Cable, 208-277V, 8/12 Watts per linear foot. Sold in 500-foot spools.	\$4,087.93
	WSR-8/12W-2-1000-CR	8 W	Self-Regulating Cable, 208-277V, 8/12 Watts per linear foot. Sold in 1000-foot spools.	\$8,173.74
	WSR-10/15W-2-250-CR	10 W	Self-Regulating Cable, 208-277V, 10/15 Watts per linear foot. Sold in 250-foot spools.	\$2,045.02
	WSR-10/15W-2-500-CR	10 W	Self-Regulating Cable, 208-277V, 10/15 Watts per linear foot. Sold in 500-foot spools.	\$4,087.93
	WSR-10/15W-2-1000-CR	10 W	Self-Regulating Cable, 208-277V, 10/15 Watts per linear foot. Sold in 1000-foot spools.	\$8,173.74

## UNJACKETED SELF-REGULATING CABLE

PRODUCT CODE	DESCRIPTION	MSRP
SR-K6UJ	Unjacketed Self-Regulating Cable Kit, 120V, 6ft long pre-terminated with 3-prong plug.	\$52.93
SR-K12UJ	Unjacketed Self-Regulating Cable Kit, 120V, 12ft long pre-terminated with 3-prong plug.	\$68.80
SR-K18UJ	Unjacketed Self-Regulating Cable Kit, 120V, 18ft long pre-terminated with 3-prong plug.	\$81.50
SR-K24UJ	Unjacketed Self-Regulating Cable Kit, 120V, 24ft long pre-terminated with 3-prong plug.	\$96.32
SR-5W-1-250-U	250ft spool of Unjacketed Self-Regulating Cable, 120V, 5W linear at 50F.	\$746.24

# TRF115-005.

AMBIENT TEMPERATURE CONTROLLER

The TRF115-005 is designed perfectly for small and medium-sized industrial, agricultural, and commercial projects.

The TRF115-005 Controller provides protection to pipes to prevent the destructive effects of pipe bursts. The device comes with a remote capillary sensor (5 ft length) that automatically activates heating cables. It also comes with an SPDT switch and is NEMA 4X, UL listed, and suitable for use under NEC article 547.

[PRODUCT LITERATURE](#)



Made with corrosion-resistant materials



Automatically activates with manual control



Secured in a weather resistant enclosure

# TRACE Series.

“PLUG AND PLAY” CONTROLLER

The TRACE Controller offers smart and easy control for pipe trace systems with a backlit screen providing a full interface and system status information.

The TRACE Controller is a “Plug and Play” power panel for pipe freeze protection. When the temperature drops below the predefined adjustable setpoint, the contactor will be activated, energizing the heating elements. DIP Switches located on the controller provide easy access to technician mode and to the system configuration settings.



Built-in GFEP protection



Electronic control & interface



Easy configuration through DIP Switches



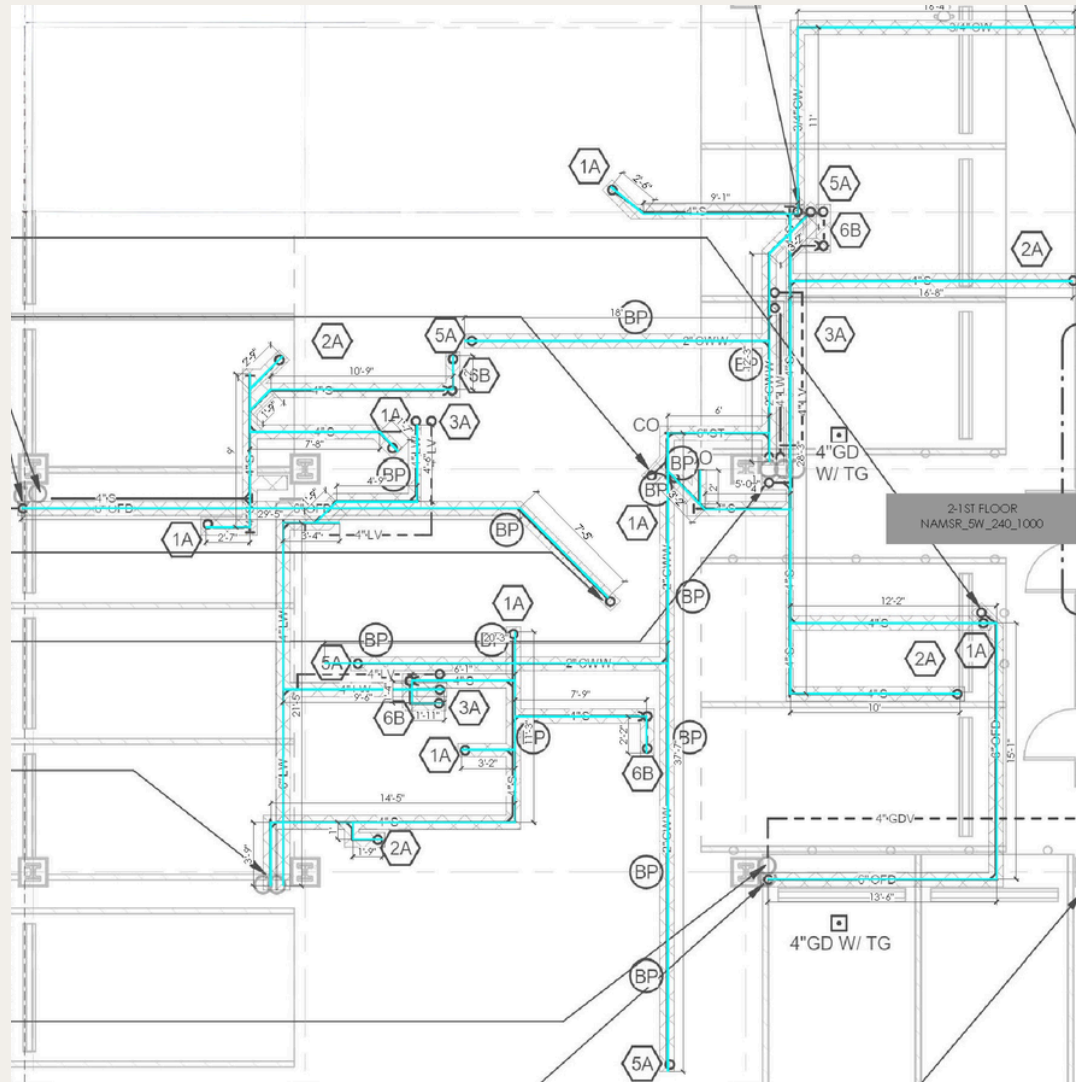
## CONTROLLERS

PRODUCT CODE	DESCRIPTION	MSRP
TRF115-005	Ambient temperature thermostatic control, trigger point can be set from 0F to 120F, line voltage 120V-277V, NEMA 4X enclosure, comes with 5ft bulb sensor.	\$260.39
ODC-TRACE-1	Heat tracing controller with built-in GFEP protection and 30A load switching capability, 120V.	1,698.00
ODC-TRACE-2	Heat tracing controller with built-in GFEP protection and 30A load switching capability, 240V.	\$1,673.49
ODC-FPT-130	Automatic freeze protection controller with 2P contactors up to 30A and integral GFEP.	\$2,073.60
SR-PLUG	Simple thermostatic controller to activate at a fixed temperature, switch 16A at 120V or 12A at 240V.	\$28.35

## ACCESSORIES

PRODUCT CODE	DESCRIPTION	MSRP
SR-SFIT-BOX-S	Power connection junction box (6x6x3) for Self Regulating Cables, includes pipe-mounting bracket and junction box.	\$241.50
SR-POWER-KIT	Power connection kit for Self-Regulating Cable, includes pipe mounting bracket and an end kit.	\$74.55
SR-END-KIT	End seal kit for for Self-Regulating Cable.	\$27.30
SR-LENDCAP	Lit end cap for Self-Regulating Cable.	\$322.35
SR-SFIT-SPL	In-line splicing connection box for fast and weather-tight connections.	\$77.70
SR-SFIT-TEE	3-way T-splice connection box for fast and weather-tight connections.	\$84.00
SR-SPLICE-KIT	Splice/tee kit for Self-Regulating Cable, includes (2) end caps.	\$49.35
SR-HTMK	Plug-in power connection and end cap kit.	\$33.87
SR-TAPE-AL	Aluminum foil tape for Self-Regulating Cable, 90 ft roll.	\$25.20
SR-TAPE-UJ	Adhesive fiberglass tape for Unjacketed Self-Regulating Cable, 1/2" W x 66' L.	\$23.29
SR-ZT-100	Bag of 100 Heavy Duty Zip Ties, 7" long, 50lbs load bearing capacity.	\$22.26
SR-LBL	Caution label for Self-Regulating Cable, pack of 10 labels.	\$24.15

LAYOUT EXAMPLE / PIPE TRACE



PRODUCT COST		COST TO RUN	
<b>\$8,709.82</b>		PER HOUR	<b>\$00.43</b>
		PER MONTH	<b>\$51.60</b>

\*Cost based on National Average kW/hr Energy Cost of \$0.17 for U.S. Monthly estimated cost based on 4 hours of run time per day.

PRODUCTS USED			SPECIFICATIONS	
Product Code	QTY	USD	Total Heated Area	435 L.FT
WSR-5/9W-2-500-CR	1	\$4,087.93	Voltage	240V
TRACE-2	1	\$1,673.49	Amperage	9.0A
Power Kits, End Kits, Tee Splices, Etc.	-	\$2,948.40	Total BTU Equivalent	7,370

# General Terms & Warranties.

## Terms of Payment.

For orders placed before credit approval, full prepayment is required. Warmup's standard payment terms are NET 30 Days from the date on the invoice. Special terms and conditions can be arranged through discussions with your Sales Manager. To establish credit, a [Credit Application with signed Business Terms](#) must be on file with Warmup. Customers opting for advance payment can make payments via credit card. Payments exceeding \$5,000 must be made either with a check or by ACH payment. Resellers must provide a Resale Certificate.

## Remit Payments.

### Checks can be mailed to the below address:

Warmup, Inc.  
25 Francis J Clarke Cir  
Suite A  
Bethel, CT, 06801

## Shipping Policy.

Shipping and handling will be invoiced based on the products purchased.

[Click here for more information on Warmup's Shipping Policies.](#)

## Returns.

Returns, in resalable condition, are allowed within 30 days of purchase for a full refund. You must request a [Return Goods Authorization \(RGA\)](#) from Warmup. Returns received without an RGA cannot be refunded. After 30 days of purchase, or after expiration of the RGA, Warmup will only issue credit notes on future orders and apply a 20% restocking fee.

## Orders.

Written orders are required and can be submitted via email or fax. Emails can be sent to [us@warmup.com](mailto:us@warmup.com) and faxes can be sent to (888) 927-4721. Orders received before 12:30 PM (Eastern Time) will be shipped on the same or next day via UPS. Orders placed after this deadline will be promptly shipped on the following business day. It is essential to inspect all deliveries for accuracy within 7 days of receipt, as no claims can be accepted thereafter.

## Map & Online Policy.

Warmup offers opportunities to sell our products online through third-party resellers or on their websites, considering that the authorized dealer agrees to the current MAP policy. Contact Warmup for more details.

## Product Warranties.

In addition to our traditional warranties, Warmup offers The SafetyNet Guarantee to all installers. Receive one free and immediate replacement for product damaged during the installation process. Because most issues happen during installation and not thereafter, Warmup wants to ensure that the system installed is free and clear of any defects or damage.

For detailed Warranty and SafetyNet terms, visit [www.warmup.com/about/best-warranties](http://www.warmup.com/about/best-warranties).

### 10-Year

WSM Snow  
Melt Cables

WSMM Snow  
Melt Mats

WSR Cables

### 2-Year

SNOPRO-100  
Controllers,  
Sensors, &  
Accessories

DS Series  
Controllers

### 18-Month

TRF  
Controller

### 1-Year

ComBox/ResiBox  
Controllers,  
Sensors, &  
Accessories

TRACE-1  
Controller

TRACE-2  
Controller

WRGH Cable

Unjacketed SR  
Cable



# About Us.

Warmup is a UK-based manufacturing Plc., creating innovative smart controls and underfloor heating solutions. Warmup, which was founded over 30 years ago, has sold more than 2.7 million systems across 72 countries, making us the world's best-selling floor heating brand. We're proud to be a research-driven business that makes proprietary, world-leading products.

Warmup Inc. is the North American branch of Warmup Plc. Warmup Inc. is an active member of local and national building associations. With a field sales presence across North America, we actively support our partners in promoting and installing our heating products for comfort, primary heating, and snow melting purposes.

## WARMUP PROVIDES HANDS-ON CARE.

- We offer expert assistance in selecting suitable heating systems for a given floor structure and finished floor surface, while taking local and national regulations into account.
- Our range of electric systems provides a comprehensive selection for designing a floor heating system, ensuring optimal heat up times, energy efficiency, and room compatibility.
- Our proprietary smart controls enable efficient control of all heating systems and integrate with major BMS platforms.
- We provide a free, instant, and accurate cost estimation for all quote and system inquiries.
- Our 24/7/365 technical helpline provides exceptional customer support and is always available to assist with any matters.
- At Warmup, we take pride in guaranteeing unparalleled service and support that is unique to our company.

# Why Warmup.

## WORLD'S BEST PRODUCTS.

- Our systems deliver heat using less energy than traditional heating systems.
- Our products are UL marked and feature globally recognized accreditation's including BEAB, cUL, CSA, FIMKO and CE.
- We offer extensive warranties and a SafetyNet Guarantee that protects against accidental damage during installation.
- Our drive for progress and innovation starts with our worldwide network of research and testing facilities.

## WORLD'S BEST SERVICE.

- Our Customer Experience Team provides 24/7/365 support for all user and technical-related assistance.
- Our free and instant quoting service provides detailed estimates.

## WORLD'S BEST SUPPORT.

- Smartcare is exclusively offered as user support to those who have a Warmup Thermostat connected to a Warmup UFH System.
- Through Smartcare, users have access to complimentary remote heating checkups.
- Smartcare enables thermostat analysis that provides energy-saving insights for users.

## WORLD'S BEST GUARANTEES.

- We offer industry leading warranties for all of our products and heating systems.
- Through our SafetyNet program, we offer free product replacement in the event of on-site damage.

