

PRODUCT CODE

CIT-1

PRODUCT DESCRIPTION

The CIT-1 Snow Sensor detects falling or blowing precipitation as snow, at temperatures below 38°F (3.3°C). The CIT-1 provides the industry's most versatile and cost effective automatic snow melting control when used with an APS-3C Controller.

Reliability and sensitivity are key CIT-1 features. The solid state design, combined with a rugged aluminum housing and epoxy potting, ensure many years of trouble free service. Precision precipitation and temperature sensors assure snow detection accuracy.

Typical applications include controlling snow melting systems for sidewalks, doorways, stairs, loading docks, ramps for the physically challenged and parking garages.

Easy installation is another key CIT-1 feature.

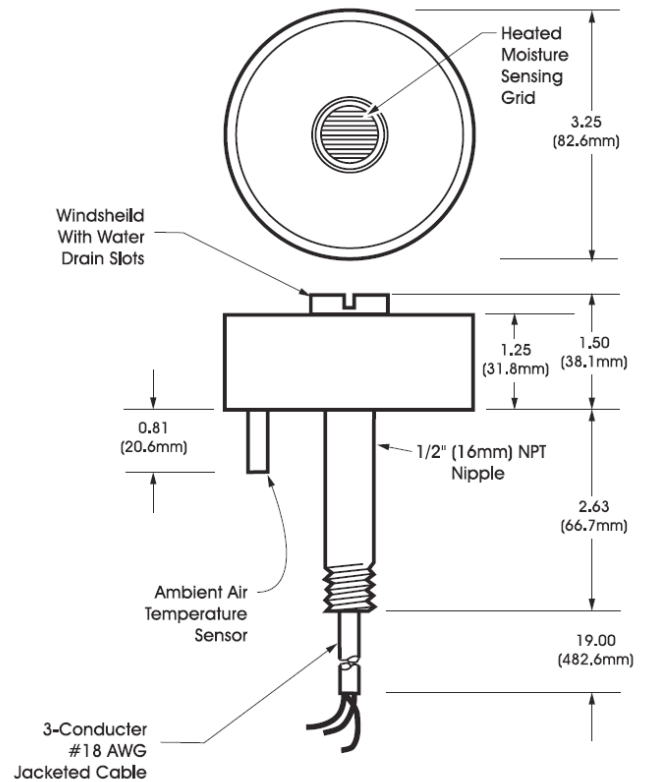
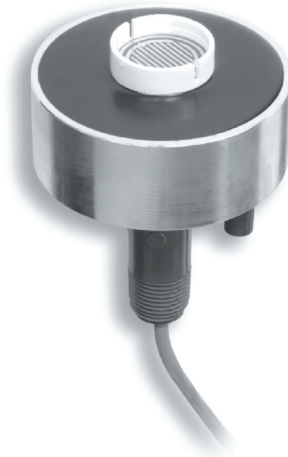
Low voltage operation, up to 2000' (609.6m) separation from the control panel, mast or roof mounting, and noncritical extension wiring are just a few of the features making this possible.

ADVANTAGES

- Minimum snow melting costs
- No supervision required
- Simple installation

SPECIFICATION

Area of Use	Gutters or Pavement (in conjunction with GIT-1 or SIT-6E)
Heater hold-on timer	None
Activation Temperature	38°F (3.37°C)
Circuit type	NEC Class 2
Supply voltage	24 VAC (Supplied by panel)
Output Signal	Voltage drop
Bus-wire type	3-wire jacketed cable
Lead Length	Up to 2,000' (609m) using 12 AWG 3-wire jacketed cable Up to 500' (152m) using 18 AWG 3-wire jacketed cable
Operating temperature	-40°F to 160°F (-40°C to 71°C)
Storage temperature	-50°F to 180°F (-45°C to 82°C)



PRODUCT LISTING

Code	Description	Amp (A)
COMMBOX-600	Plug-and-Play outdoor controller with 4 x 50A/3pole contactors allowing for a total load of 600A with a minimum power supply of 60A. Comes in LED enclosure with GFEP protection, built-in Digital controller and ground temperature sensor.	600A
AIRsense	Outdoor moisture and temperature sensor, supplied with mounting bracket.	N/A
APS-3C	Snow Melting Controller with incl. slab sensor and built-in dry contacts for EMC and remote control. Rated 208-277V single phase.	N/A
SIT-6E	Surface-mounted snow and ice sensor used with APS series panels. Detects moisture and temperatures and triggers below 38F for energy-efficient operation. Easy mounting in slabs with multiple conduit connections.	N/A
CIT-1	The maintenance free CIT sensors activate snow melting systems below 38°F and provide automatic triggering of APS series panels. Mast or roof mounting.	N/A
GIT-1	GIT-1 gutter sensor for APS-3C panel. Measures moisture & temperature. Active below 38F.	N/A
GF-PRO	Automatic Controller with GFEP and GF Load	30A

WARRANTY & MAINTENANCE

When installed according to the installation manual, the CIT-1 is covered with Warmup's 1-year manufacturer warranty.

TECHNICAL SUPPORT

Warmup is available 24/7/365 at (888) 927-6333.

For quotes, layouts and specific technical information, contact us at:

Warmup USA

52 Federal Rd #1F, Danbury, CT 06810

(888) 927-6333

us@warmup.com

Warmup CANADA

374 Wellington St W, Toronto, ON M5V 1E3

(905) 990-2075

ca@warmup.com

RELATED PRODUCTS

- GIT-1 Gutter Ice Sensor - see WSC-1204
- SIT-6E Pavement Mounted Snow Sensor - see WSC-1304
- APS-3C Snow Melting and Gutter De-icing - see WSC-1404
- GF-PRO Snow Switch Model - see WSC-1504