

Bring warmth &  
comfort to your  
home with Warmup®  
**Floor Heating**

**Warmup**®

Floor Heating



# Make it Radiant

## WHY USE UNDERFLOOR HEATING?

Traditional furnace heating systems heat the air, which then warms up the people in the room. Radiant heating systems work by directly warming the people and objects in a room. This type of heating often feels like the warmth of the sun and because the heat is stored in your floor, it is actually very efficient to run.

“Radiant heating has a number of advantages. It is more efficient than baseboard heating and usually more efficient than forced-air heating because it eliminates duct losses. People with allergies often prefer radiant heat because it doesn’t distribute allergens like forced air systems can.” U.S. Department of Energy.

**Energy Efficient** - Electric systems are viewed as expensive, but electricity is 100% effective. You can heat a 100 sqft bathroom with about 600 watts, or the equivalent of a few lightbulbs.

**Versatile** - Install it in the bathroom, sunroom, or the whole house! Warmup heating systems deliver primary heating under any type of flooring.

**Indoor Air Quality** - Your furnace kicks on 9x an hour on average and replace the air in the room, circulating pet dandruff and other allergens into the air. None of that happens with heated floors. They are silent, invisible, and maintenance free.

**Ease of Installation** - Warmup® systems are easy to install and supported by a technical team 24/7. Let us connect you with an experienced installer for your project.

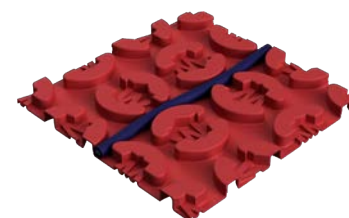
## WHAT ARE THE WARMUP SOLUTIONS?

### HEAT UNDER ANY TYPE OF FLOORING WITH A 4iE® THERMOSTAT



The 4iE® is a Smart thermostat that works with you to provide an optimal, cost-effective and energy-efficient heating system. For use with electric underfloor heating systems and electric baseboard heat, the 4iE does not require programming and uses Warmup’s latest technologies to ensure your home is always at the desired temperature, at the right time. See more on page 22.

### USE UNDER TILE & STONE, LVT’S AND GLUED-DOWN WOOD FLOORS



Warmup DCM-PRO system comprises a cable designed to fit the Warmup DCM-PRO Membrane. The cable can be spaced to customize heat output and coverage. Use DCM-PRO under tile, stone, LVT and over most subfloors. See more starting on page 6.



The Heating Mat system consists of a thin 1/8” wire evenly spaced and taped to a fiberglass mesh with pressure-sensitive adhesive. The adhesive securely binds the mats to the floor. The Sticky Mat System is ideal for installations in regularly shaped areas, where the 20” or 3’ wide mats can be quickly rolled out across the floor. It is also compatible with all floor coverings once embedded in leveler, thin-set, or mortar. See more on starting on page 16.

### USE UNDER CARPET OR FLOATING ENGINEERED



The Warmup FOIL system is an electric mat for floating floors that requires no mortar. It is designed to be installed between underlay and the finished flooring. All tested carpet pads are sufficient underlay. For laminate and wood installations, Warmup recommends the use of WIU insulation to provide better heat outputs and faster heat-up times. See more on starting on page 20.

### USE IN-SLAB



The Warmup In-Slab cable System is designed for use within a concrete slab. The cable spacing can be altered between 3”-5” to fit the heating requirements and the thickness of the slab. Warmup WODH cables provide 20W per sqft or up to 70 BTUs per hour and easily replace water-based applications. With an electric system there is no boiler, no pump, no manifolds and no maintenance required. It is the ideal solution in basements and room additions. See more on page 15.

# PLANNING YOUR PROJECT

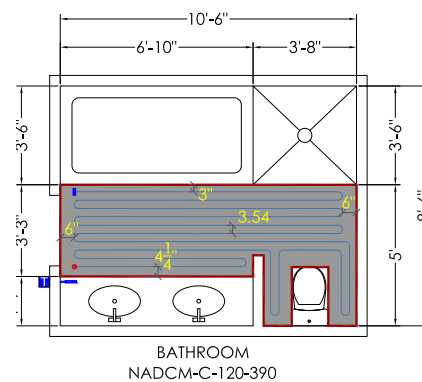
## RELY ON US

You can email us ([ussales@warmup.com](mailto:ussales@warmup.com)) with anything good enough to describe your project. From a set of blueprints to a few notes on a napkin, we've seen it all. Don't be shy, send it over. We'll complete a detailed installation plan for you within 24 hours.

## CALCULATE IN A FEW EASY STEPS

Warmup heating cables are not installed wall-to-wall or under any fixtures that lay flush to the floor. To calculate what size system you will need, measure your room and deduct any fixtures (i.e. toilets, vanities, washers, dryers, cabinets).

Using the heated square footage you can proceed to the product pages and follow the steps to assemble an order for your project.



## SUBFLOOR TYPES AND INSULATION

You can install heated floors over plywood, cement boards or concrete slabs. Different methods will apply, but the main consideration should be heat loss. Typically, this is not an issue over plywood as it acts as an insulator. However, when installing over slabs or uninsulated crawl spaces, the heat from your system may be wasted downwards rather than heating the room. Consider the insulation panels from Warmup available on p. 20 to reduce heat loss and improve your system's efficiency.

## CONTROLS & ELECTRICAL PROVISIONS

For projects requiring up to 120 sqft of heating, 120-volt system power should be sufficient. In smaller rooms, you may be able to utilize the power of an existing circuit, but beyond 60 sqft, check with an electrician whether you need a dedicated service.

For projects beyond 120 sqft, we recommend designing a 240 volt system. Both voltages are equally efficient, but 240 volt wiring allows for more amperage and therefore square footage on a single thermostat.

Warmup thermostats can switch up to 15 Amps of power, or about 300 sqft at 240V.

For areas larger than that, add a RL-240 relay (Page 9) which expands your system 500 sqft at a time. Warmup recommends "zoning" larger installations. This means that for every space used at different times or different temperatures, plan to have a thermostat. For example, you can put the Kitchen + living + dining on one circuit, or the Master Bed + Bath on another.

And yes, you can even warm a shower floor!



# DCM-PRO Cable

Warmup DCM-PRO Cable is designed to fit the Warmup DCM-PRO Membrane.

The cable can be spaced at various intervals for the highest flexibility in heat outputs, from Comfort Heating to Primary Heating.

For better results, pair with the Warmup 4iE® Smart thermostat for lowest consumption cost when installed with 1/4" Warmup Ultralight™ 3-in-1 insulation boards.

## Quote in 5 Easy Steps:

1. Cable
2. Membrane OR Fixing Strips
3. Accessories
4. Thermostat
5. Optional Insulation

Thickness	3/16" (4.5mm - +/- 0.2mm)
Output	Varies with spacing from 11w/sqft to 20w/sqft
Construction	Multi-stranded, dual wire
Inner insulation	ETFE
Outer jacket	PVC
Ground braid	85% min copper
Cold lead	10ft (3m) long, 2 core braided

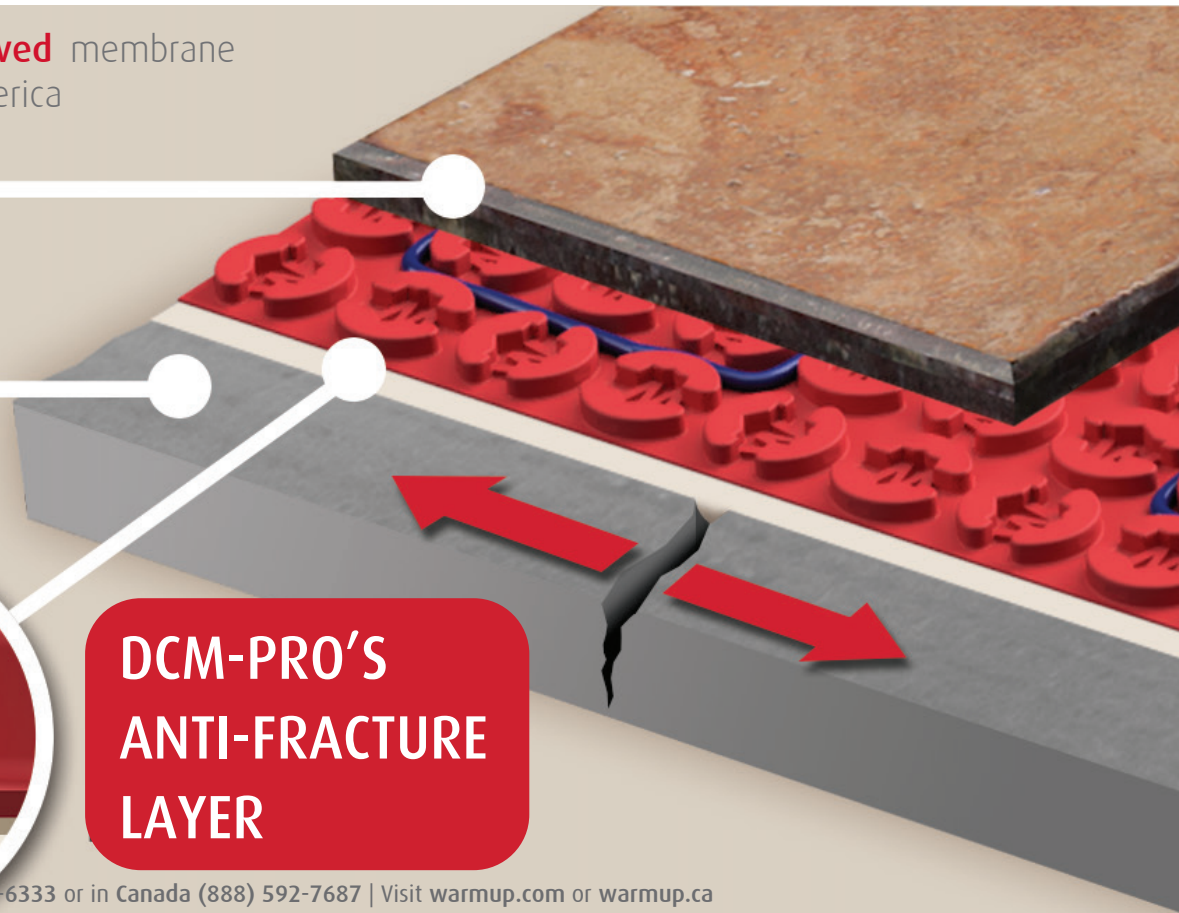
The DCM-PRO system is warranted for life when comprised of a Warmup thermostat, the DCM-PRO Membrane and the DCM-PRO Cable. For full warranty details, see [www.warmup.com/about/best-warranties](http://www.warmup.com/about/best-warranties)

The **only UL-Approved** membrane system in North America

Tiled floor

Subfloor

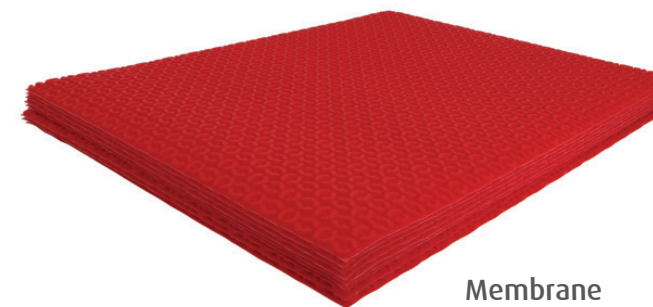
**DCM-PRO'S ANTI-FRACTURE LAYER**



1.	PRODUCT CODE	Cable length (ft)	Amps	Resistance (Ω)	Square Foot Coverage with Membrane				Square Foot Coverage Loose Lay		Canada	USA
					2-3 pegs	3 pegs	3-4 pegs	4 pegs	3"	4"		
120 Volt	DCM-120-65	16.7	0.5	221.5	4	5	6	7	4	6	\$170.00	\$135.87
	DCM-120-130	33.1	1.1	110.8	8	10	12	13	8	11	\$196.00	\$156.61
	DCM-120-195	49.9	1.6	73.8	13	15	18	20	12	17	\$247.00	\$197.28
	DCM-120-260	66.3	2.2	55.4	17	20	23	27	17	22	\$272.00	\$217.46
	DCM-120-325	83.0	2.7	44.3	21	25	29	33	21	28	\$312.00	\$249.15
	DCM-120-390	99.4	3.3	36.9	25	30	35	40	25	33	\$338.00	\$269.74
	DCM-120-525	132.9	4.4	27.4	33	40	47	53	33	44	\$410.00	\$327.73
	DCM-120-655	166.0	5.5	22.0	42	50	58	67	42	55	\$449.00	\$358.41
	DCM-120-785	199.1	6.5	18.3	50	60	70	80	50	66	\$495.00	\$395.48
	DCM-120-920	232.3	7.7	15.6	58	70	82	93	58	77	\$543.00	\$433.67
	DCM-120-1050	265.4	8.8	13.7	67	80	93	107	66	88	\$587.00	\$469.33
	DCM-120-1180	298.6	9.8	12.2	75	90	105	120	75	100	\$655.00	\$523.50
	DCM-120-1315	331.7	11.0	11.0	83	100	117	133	83	111	\$717.00	\$573.35
DCM-120-1445	364.8	12.0	10.0	91	110	128	147	91	122	\$770.00	\$615.55	
DCM-120-1575	398.0	13.1	9.1	100	120	140	160	99	133	\$782.00	\$625.47	
240 Volt	DCM-240-195	50.0	0.8	296.0	13	15	18	20	12	17	\$247.00	\$197.28
	DCM-240-325	83.0	1.4	177.2	21	25	29	33	21	38	\$324.00	\$258.72
	DCM-240-390	99.4	1.6	147.7	25	30	35	40	25	33	\$330.00	\$263.60
	DCM-240-525	132.9	2.2	109.7	33	40	47	53	33	44	\$399.00	\$318.43
	DCM-240-655	166.0	2.8	87.9	42	50	58	67	42	55	\$434.00	\$346.45
	DCM-240-785	199.1	3.3	73.4	50	60	70	80	50	66	\$488.00	\$390.11
	DCM-240-920	232.3	3.9	62.6	58	70	82	93	58	77	\$537.00	\$429.54
	DCM-240-1050	265.4	4.5	54.9	67	80	93	107	66	88	\$576.00	\$460.40
	DCM-240-1180	298.6	5.0	48.8	75	90	105	120	75	100	\$633.00	\$506.00
	DCM-240-1310	331.7	5.6	44.0	83	100	117	133	83	111	\$670.00	\$535.95
	DCM-240-1640	414.7	7.0	35.1	104	125	146	167	104	138	\$790.00	\$631.80
	DCM-240-1970	497.7	8.4	29.2	125	150	175	200	124	166	\$990.00	\$791.55
	DCM-240-2300	580.7	9.8	25.0	146	175	204	233	145	194	\$1,089.00	\$870.75
	DCM-240-2630	663.4	11.2	21.9	166	200	233	266	166	221	\$1,130.00	\$903.60
	DCM-240-2955	746.4	12.6	19.5	187	224	262	300	187	249	\$1,209.00	\$967.05
DCM-240-3240	829.4	13.5	17.8	208	249	292	333	207	276	\$1,330.00	\$1,063.35	

\*for 208V figures, see product specification sheet, which can be found on [warmup.com](http://warmup.com) or [warmup.ca](http://warmup.ca)

## 2. APPLICATION - MEMBRANE OR FIXING STRIPS



Membrane



Fixing Strips

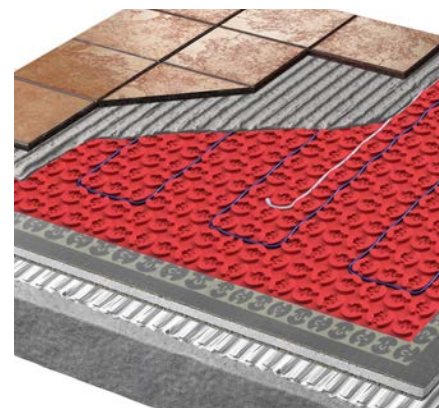
# DCM-PRO Uncoupling Membrane

## Peel-and-Stick or Fleece-Backed

The TCNA-tested DCM-PRO anti-fracture Membrane is available in peel-and-stick or fleece-backed and can be installed on wood and cement subfloors using any tile adhesive. The patented DCM-PRO design allows

for more cable to adhesive contact, ultimately distributing heat more evenly. There is no waiting required after installation so you can begin laying the flooring immediately.

### Application



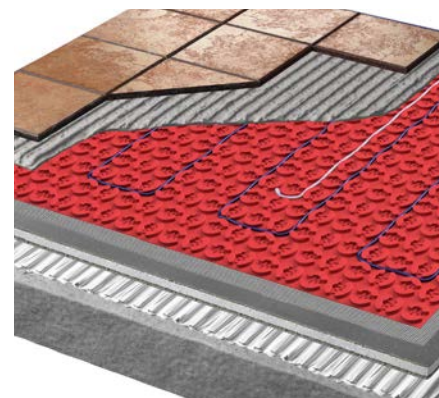
#### Peel-and-Stick

Installs in minutes with self-adhesive backing.

- Ideal for installation over plywood, concrete, or WIB
- Best for remodels and multi-units for fast installation
- Tile immediately
- 40% savings on labor and material
- Doesn't roll back: no memory
- Increased thinset-to-cable contact for more efficient heating

**NO THINSET REQUIRED BELOW**

Code	Description	Dimensions of each sheet/roll	Canada	USA
DCM-PSW-80	Box of 10 Peel-and-Stick sheets, covering 81.6sqft in total.	3'3" x 2'7"	\$287.00	\$229.00
DCM-PSW-150	Roll of Peel-and-Stick membrane, covering 150 sqft in total.	3'3" x 47'2"	\$462.00	\$369.00



#### Fleece-Backed

Use with any tile adhesive above and below

- Ideal for installation over rough and uneven subfloors (OSB)
- Tile in 1 hour
- Apply and cover with modified adhesives
- Compatible with Self-Levelers
- Increased thinset-to-cable contact for more efficient heating

Code	Description	Dimensions of each sheet/roll	Canada	USA
DCM-MW-80	Box of 10 Fleece-backed sheets, covering 81.6sqft in total.	3'3" x 2'7"	\$262.00	\$209.00
DCM-MW-150	Roll of Fleece-backed membrane, covering 150 sqft in total.	3'3" x 47'2"	\$437.00	\$349.00

### 3.

Code	Accessories	Canada	USA
ACC-DGMTR	The Alligator Tester - Digital Multimeter.	\$25.00	\$20.00
DCM-SP-10K	Additional Floor Sensor for the 4iE®.	\$26.00	\$21.00
RL-240V25A	General purpose 25A/240V relay used to expand the switching capability of the Warmup thermostats. Mounts in single gang box.	\$104.00	\$82.50
DCM-FB-82	Metal fixing band. 82' long spool.	\$131.00	\$105.00
ACC-PLTL	Heavy Duty Plastic Trowel 11" x 5.5" with 1/4" U-notch design.	\$15.00	\$14.97
ACC-MEGG	Used to track Insulation Resistance for installation Accuracy and Warranty Purposes.	\$223.40	\$197.80
RK-INDOOR	Indoor heating cable repair kit.	\$12.77	\$10.00
RK-ENDCAP	Indoor heating cable end cap repair kit.	\$12.77	\$10.00
RK-JOINT	Indoor heating cable factory joint repair kit.	\$12.77	\$10.00
ACC-00WATCHDOG	The Watch Dog Tester - Sounds an alarm when connected to a broken heating cable.	\$25.00	\$20.00

Code	Waterproofing Accessories	Canada	USA
DCM-WP-ROLL	Waterproofing for DCM-PRO. Includes a 35ft roll of tape.	\$44.31	\$33.29
DCM-WP-IC	Waterproofing for DCM-PRO. Includes 2 inside corners	\$15.42	\$11.58
DCM-WP-OC	Waterproofing for DCM-PRO. Includes 2 outside corners	\$15.42	\$11.58

### 4.

Code	Thermostat	Canada	USA
4iE-V03-WH	Warmup's Non WiFi white 4iE®	\$249.00	\$223.00
4iE-V04-WH	Warmup's most popular thermostat, the white WiFi 4iE®	\$309.00	\$289.00

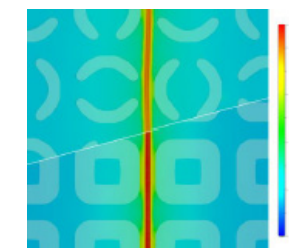
### 5.

Code	Optional Insulation	Canada	USA
WCI-01	Single 4'x2' Ultralight sheet with 3-in-1 capabilities: insulating, heat spreading, and decoupling.	\$27.66	\$21.28

## The Warmup Advantage

Warmup's Membrane design provides better contact with the thinset or leveler. This allows for the heat to spread faster and more evenly through the floor. Other membrane restrict cable-to-thinset contact and cause overheating which reduces the cable lifespan. Additional features include:

- Speed and flexibility of installation at 2-3-4 peg spacing
- Primary Heating outputs
- Rated Heavy Commercial (ASTM C627)
- Anti-fracture protection (ANSI 118.12)
- Even floor temperature with better cable-to-thinset contact
- Suitable for every floor covering and ready to tile
- Waterproofing capability with DCM-WP-KIT

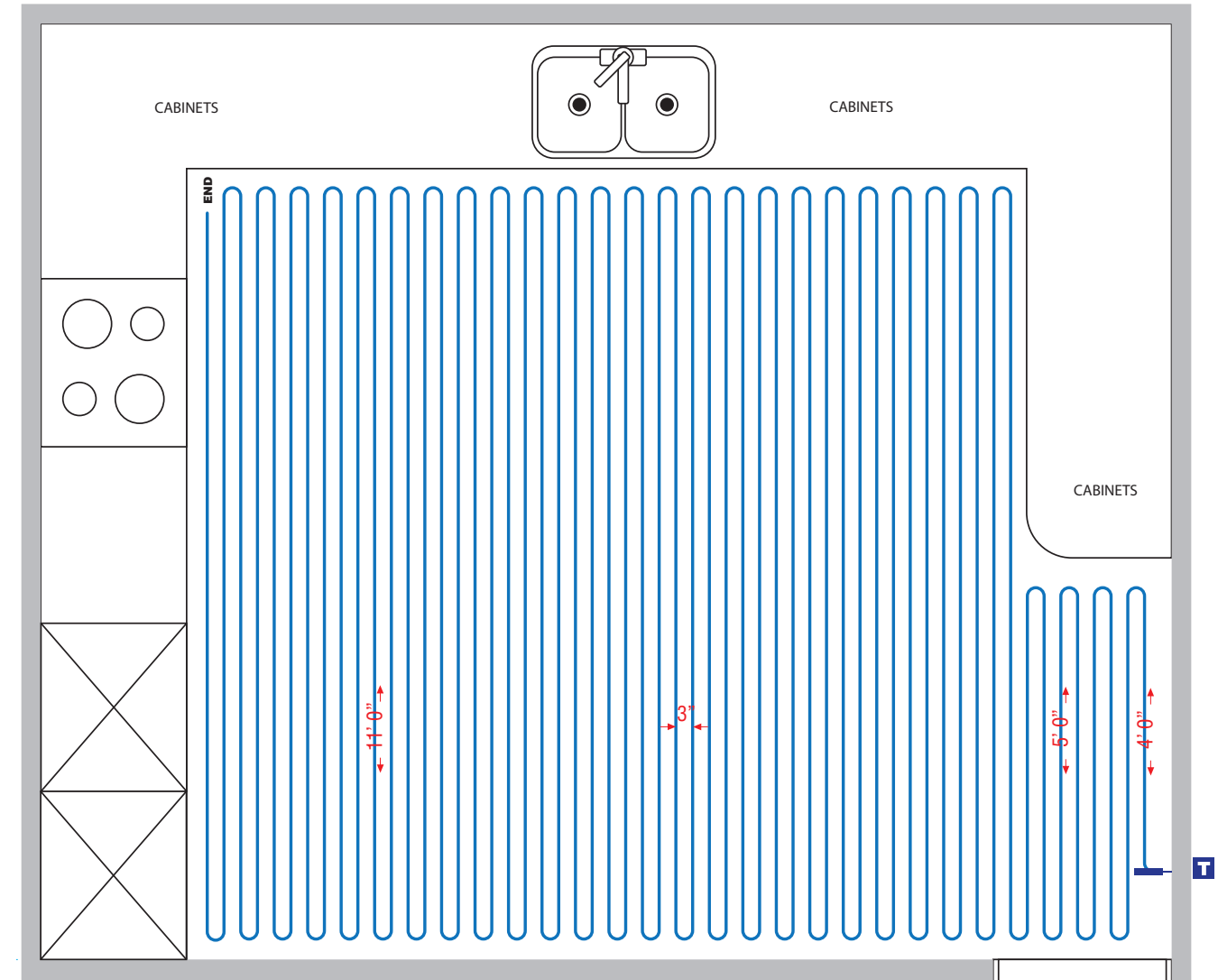
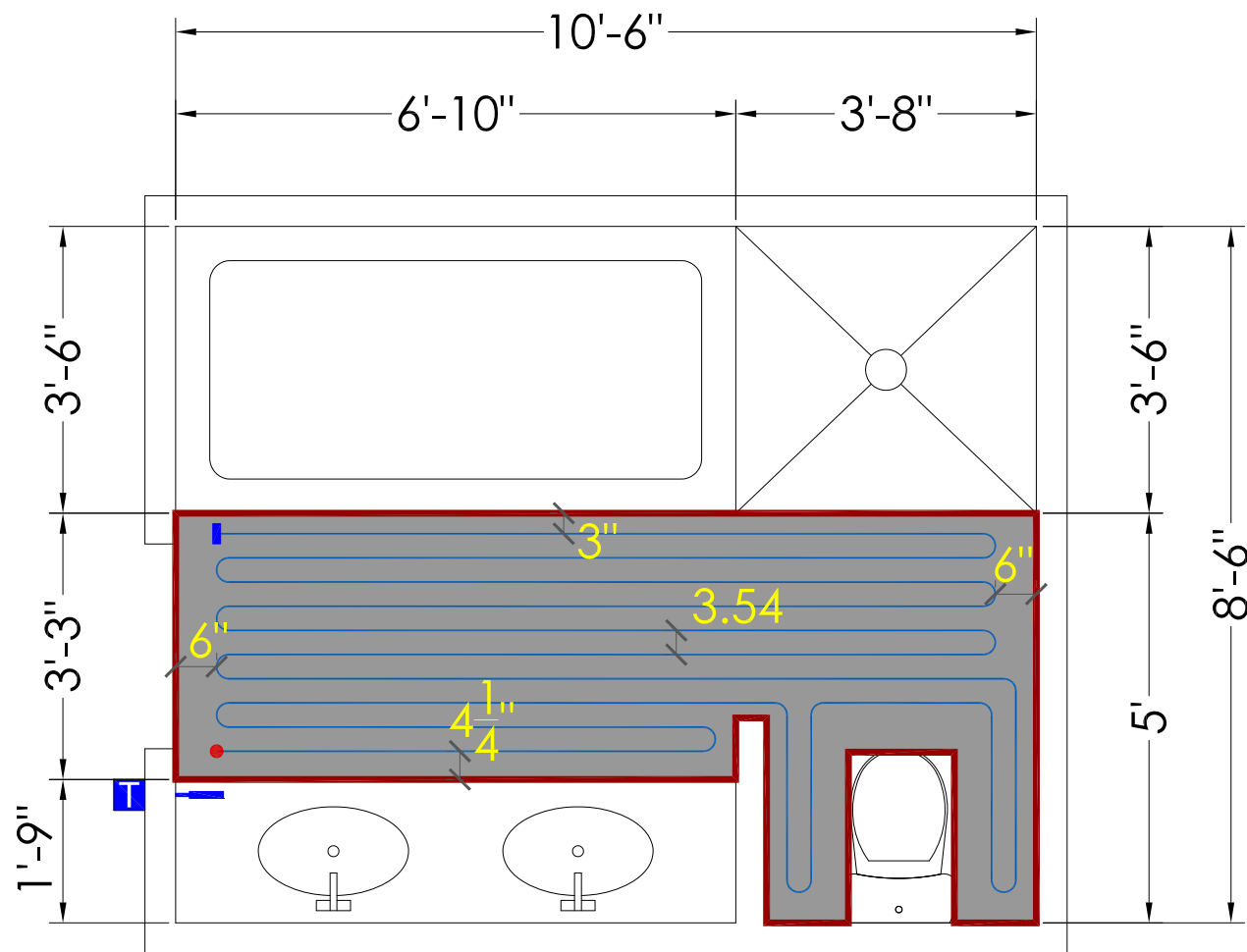


Temperature distribution of DCM-PRO (Top) vs. generic product (Bottom), through both the heated layer (Left) and the floor surface (Right)

## The ONLY UL-APPROVED membrane heating system

The world's best-selling floor heating brand

# DCM-PRO Project Examples



Size 89 sq. ft.		Price \$767.74		Type DCM-PRO	
Total Room Area	89 sq. ft.			<b>Specifications</b>	
Surface to be Heated	35 sq. ft.			Voltage	120
Heating System	DCM-C-120-390			Amps	3.30
Membrane	DCM-MW-80			Monthly Cost to Run	\$5.69
Thermostat	4iE-03 Thermostat			Total BTU Equivalent	1,330
Subtotal		\$767.74			

Size 237 sq. ft.		Price \$1,383.55		Type DCM-PRO	
Total Room Area	237 sq. ft.			<b>Specifications</b>	
Surface to be Heated	150 sq. ft.			Voltage	240
Heating System	DCM-C-240-1970			Amps	8.21
Membrane	DCM-PSW-150			Monthly Cost to Run	\$18.76
Thermostat	4iE-03 Thermostat			Total BTU Equivalent	6,723
Subtotal		\$1,383.55			

# Waterproofing Kit

Recommended in wet areas such as bathrooms and showers

Having your bathroom waterproofed is one of the most important aspects of a home improvement project. That's because waterproofing not only protects structures against damage but also eliminates possible health concerns that can come from mold growth.



Warmup's 3-ply waterproof membrane protects floors and walls under thin-set tile installations from substrate cracks and moisture migration. It is comprised of 2 outer polypropylene layers and one inner polyethylene waterproofing membrane and exceeds testing requirements per ASTM 118.10. The kit includes a 35ft roll of 5"-wide membrane, along with 2 outer corners and 6 inside corners to complete waterproofing in most common bathrooms under 100 sqft.

Code	Waterproofing Accessories	Canada	USA
DCM-WP-B35	Waterproofing for DCM-PRO. Includes a 35ft roll of tape.	\$44.31	\$33.29
DCM-WP-IC	Waterproofing for DCM-PRO. Includes 2 inside corners	\$15.42	\$11.58
DCM-WP-OC	Waterproofing for DCM-PRO. Includes 2 outside corners.	\$15.42	\$11.58

## DIMENSIONS

Roll	35' x 5"
Inside corner (2/kit)	115mm * 115mm
Outside corner (2/kit)	105mm * 105mm

Warmup's waterproof membrane is recommended in wet areas such as bathrooms and showers and is designed to be used in conjunction with the DCM series of Warmup membranes and heating systems (DCM-PRO).

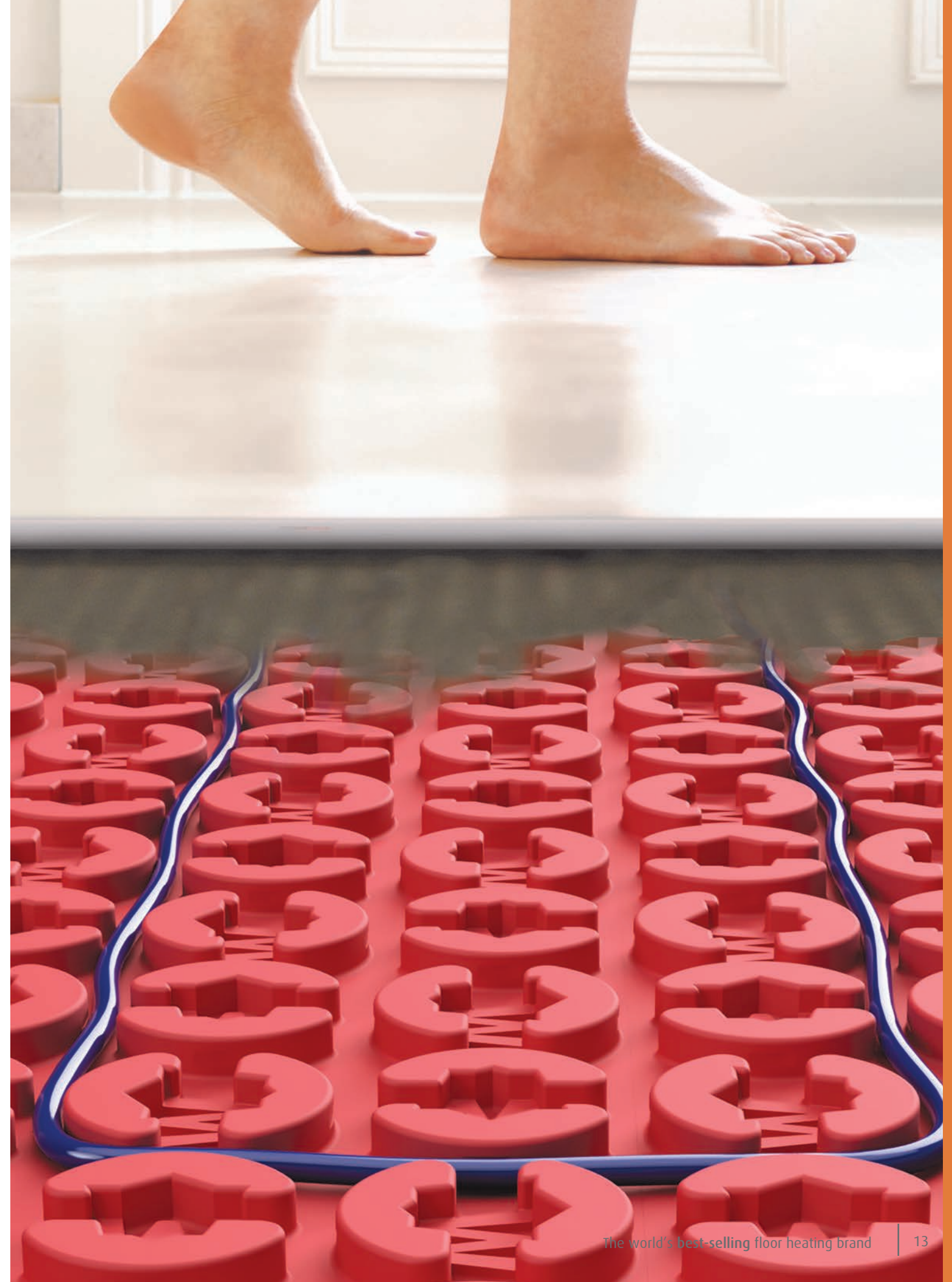
- Apply on wood and cementitious substrates prepared for tile floors.
- Suitable for bathrooms, kitchens, showers and wet rooms in residential and commercial environments.
- Suitable for exterior applications on balconies and terraces.
- Can meet requirements of high moisture stress classifications (swimming pools) with appropriate sealants.

## INSTALLATION

Apply the membrane with modified thin-set onto subfloor. As needed, mark areas where membrane will join on the floor in order to tape all seams and wall connections. Tape all wall surrounds by bending the tape at midpoint. Use corner pieces where suitable. Apply DCM-PRO membrane with thin-set ensuring that all seams are situated over waterproofing tape. Press down with lightweight roller, or manually with flat rubber trowel.

## TECHNICAL SPECIFICATIONS

Temperature resistance	-22F/-30C to +194F/90C
Thickness	0.5 mm
Weight	.2 lbs/sqft, 307 grams/meter
Bonding Strength	0.2N/mm <sup>2</sup>
Fire Classification	B2



# DCM-PRO Loose Cable System for Wood Floors

## Use under nailed hardwood floors

Warmup loose cable for hardwood has been tested by many wood suppliers and is the ideal solution for radiant heating under solid wood floors. Installed at 3" to 4" spacing between sleepers about 10" to 16" on center, it allows for a nailing surface to protect the cable from damage. Filling the gaps between sleepers with thinset or drypack creates the heat mass

necessary to provide gradual and safe heating throughout the hardwood floors.

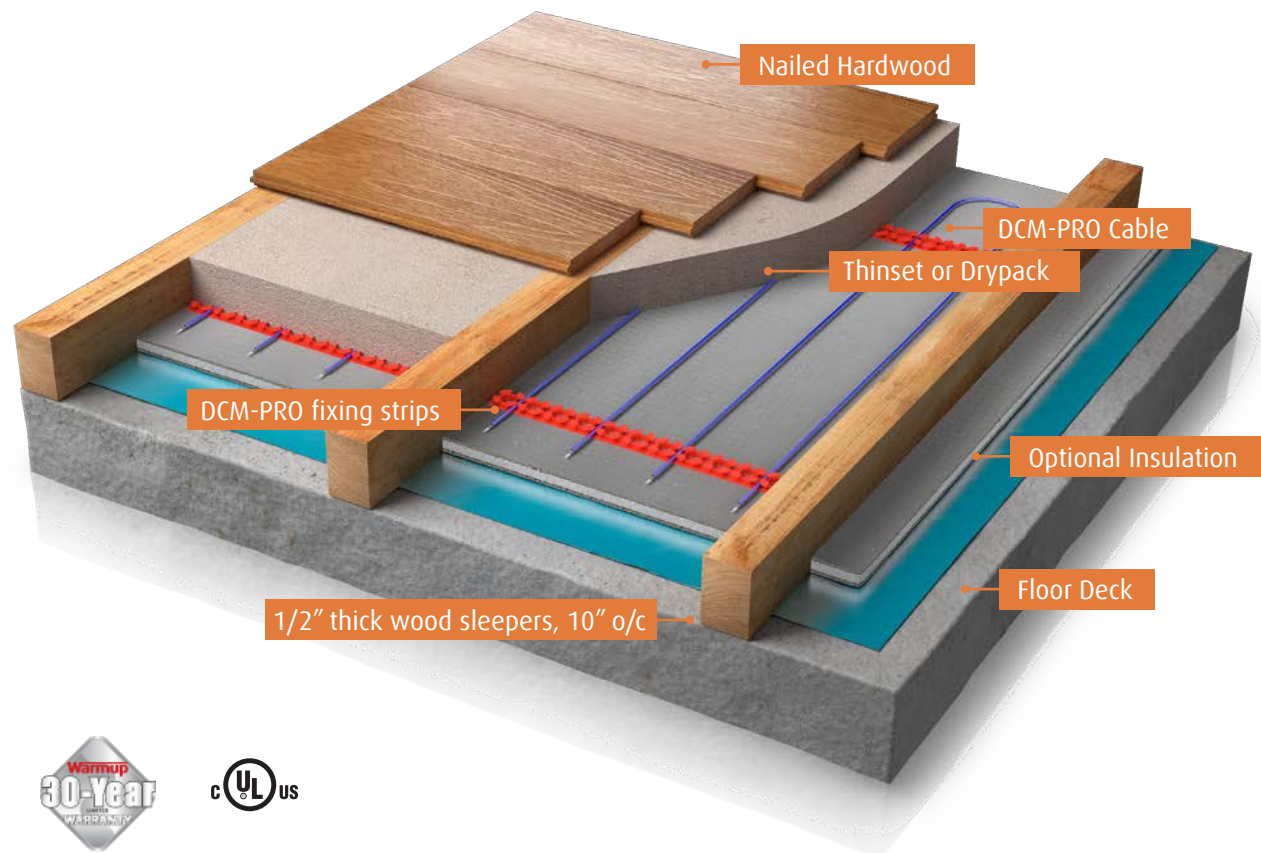
Electric floor heating systems do not affect moisture and will not impact your wood, unlike hydronic systems. It does not leak or freeze and is a tried and true solution in kitchens, basements, dining rooms and more.



**DID YOU KNOW?**  
Warmup's 4iE thermostat blocks floor temps under wood at 81F automatically in order to comply with Wood Manufacturer warranties

### SEE PAGE 7

Quote with cable at 3" loose lay spacing with DCM-FB-82 fixing band.

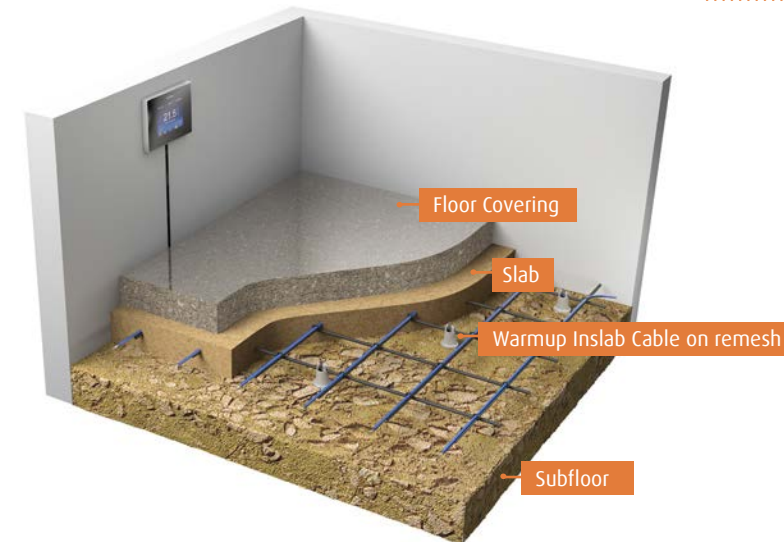


# WODH In-slab cable

## Cable System for Slab Pours up to 6"

The Warmup In-Slab cable System is designed for use within a concrete slab. The cable spacing can be altered to fit the heating requirements and the thickness of the slab. Warmup WODH cables provide 20W per sqft or up to 70 BTUs per hour and easily

replace water-based applications. With an electric system there is no boiler, no pump, no manifolds and no maintenance required. It is the ideal solution for builders and remodelers in basements and room additions.



### Quote in 3 Easy Steps:

1. Cable
2. Accessories
3. Thermostat



1. Cable length	Code	3"	4"	5"	Wattage	Amps	Resistance (Ω)	Canada	USA
93	WODH-240/500	24	30	39	500	2.1	114.30	\$344.00	\$274.50
176	WODH-240/950	44	59	74	950	4.0	60.00	\$524.00	\$418.50
250	WODH-240/1300	62	84	104	1300	5.4	44.40	\$604.00	\$482.50
315	WODH-240/1700	76	104	130	1700	7.1	33.80	\$763.00	\$610.50
437	WODH-240/2400	105	146	182	2400	10.0	24.00	\$1,023.00	\$818.00
625	WODH-240/3400	155	210	260	3400	14.2	16.90	\$1,225.00	\$980.00

2. Code	Accessories	Canada	USA
ACC-DGMTR	The Alligator Tester Digital Multimeter.	\$25.00	\$20.00
DCM-SP-10K	Additional Floor Sensor for the 4iE®	\$26.00	\$21.00
RL-240V25A	General purpose 25A/240V relay used to expand the switching capability of the Warmup thermostats. Mounts in single gang box.	\$104.00	\$82.50
DCM-FB-82	Metal fixing strips to fix the heating cable - 82 ft long.	\$131.00	\$105.00
SR-ZT-100	Bag of 100 Heavy Duty Zip Ties. 7" long. For use with WSM, WODH and SR cable series. 50lbs load bearing capacity.	\$34.50	\$27.60

3. Code	Thermostat	Canada	USA
4iE-V03-WH	Warmup's Non WiFi white 4iE®	\$249.00	\$223.00
4iE-V04-WH	Warmup's most popular thermostat, the white WiFi 4iE®	\$309.00	\$289.00





# StickyMat™

Use under tile, stone & LVT

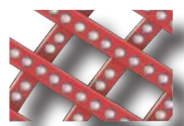
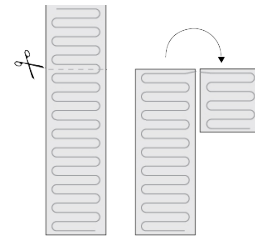
The Warmup StickyMat is designed for use within an adhesive layer under tiles or within a levelling compound under other floor finishes.

The fixed spacing and self-adhesive mat makes installation of regularly shaped rooms quick and easy, whilst ensuring precision is maintained.

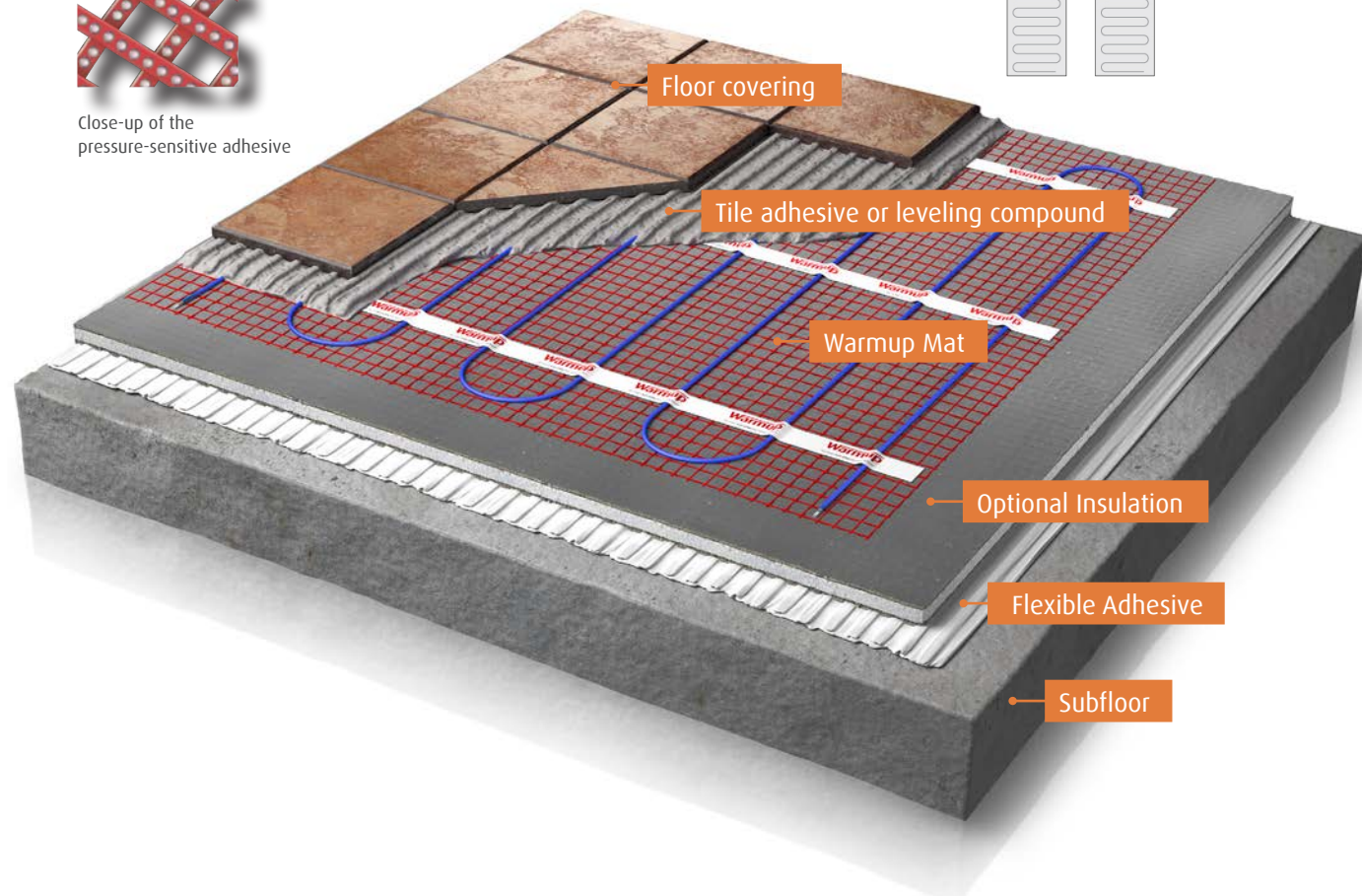


## Quote in 4 Easy Steps:

1. Heating Mat
2. Accessories
3. Thermostat
4. Optional Insulation



Close-up of the pressure-sensitive adhesive



1. Area (sqft)	Code	Mat Length (ft) (20" wide)	Wattage	Amps	Resistance (Ω)	Canada	USA
10	DWM-120-140	6'	140	1.16	102.8	\$266.75	\$217.50
15	DWM-120-210	9'	210	1.75	68.5	\$337.70	\$275.00
20	DWM-120-280	12'	280	2.33	51.4	\$379.50	\$309.00
25	DWM-120-350	15'	350	2.91	41.2	\$422.40	\$344.00
30	DWM-120-420	18'	420	3.49	34.3	\$465.30	\$379.00
40	DWM-120-560	24'	560	4.66	25.7	\$578.05	\$471.00
50	DWM-120-700	30'	700	5.82	20.6	\$691.90	\$563.50
60	DWM-120-840	37'	840	7.01	17.1	\$804.65	\$655.00
75	DWM-120-1050	46'	1050	8.75	13.7	\$974.05	\$793.50
90	DWM-120-1260	55'	1260	10.52	11.4	\$1,129.70	\$920.00
110	DWM-120-1540	67'	1540	12.76	9.4	\$1,314.50	\$1,070.50
120	DWM-120-1620	73'	1620	13.48	8.9	\$1,412.95	\$1,151.00
25	DWM-240-350	15'	350	1.45	164.6	\$422.40	\$344.00
40	DWM-240-560	24'	560	2.33	102.9	\$578.05	\$471.00
50	DWM-240-700	30'	700	2.91	82.3	\$691.90	\$563.50
75	DWM-240-1050	46'	1050	4.37	54.9	\$974.05	\$805.00
90	DWM-240-1260	55'	1260	5.25	45.7	\$1,129.70	\$920.00
110	DWM-240-1540	67'	1540	6.41	37.4	\$1,342.00	\$1,070.50
150	DWM-240-2100	91'	2100	8.75	27.4	\$1,696.20	\$1,381.50
180	DWM-240-2520	110'	2520	10.48	22.9	\$1,979.45	\$1,612.00
220	DWM-240-3080	134'	3080	12.83	18.7	\$2,263.25	\$1,842.50
240	DWM-240-3240	146'	3240	13.48	17.8	\$2,404.60	\$1,958.00
9	DWM-09-120	3 x 3	126	1.05	114.3	\$249.00	\$198.50
15	DWM-15-120	3 x 5	210	1.75	68.5	\$325.05	\$264.50
18	DWM-18-120	3 x 6	252	2.10	57.1	\$366.85	\$298.50
24	DWM-24-120	3 x 8	336	2.80	42.9	\$415.00	\$331.50
30	DWM-30-120	3 x 10	420	3.50	34.3	\$447.70	\$364.50

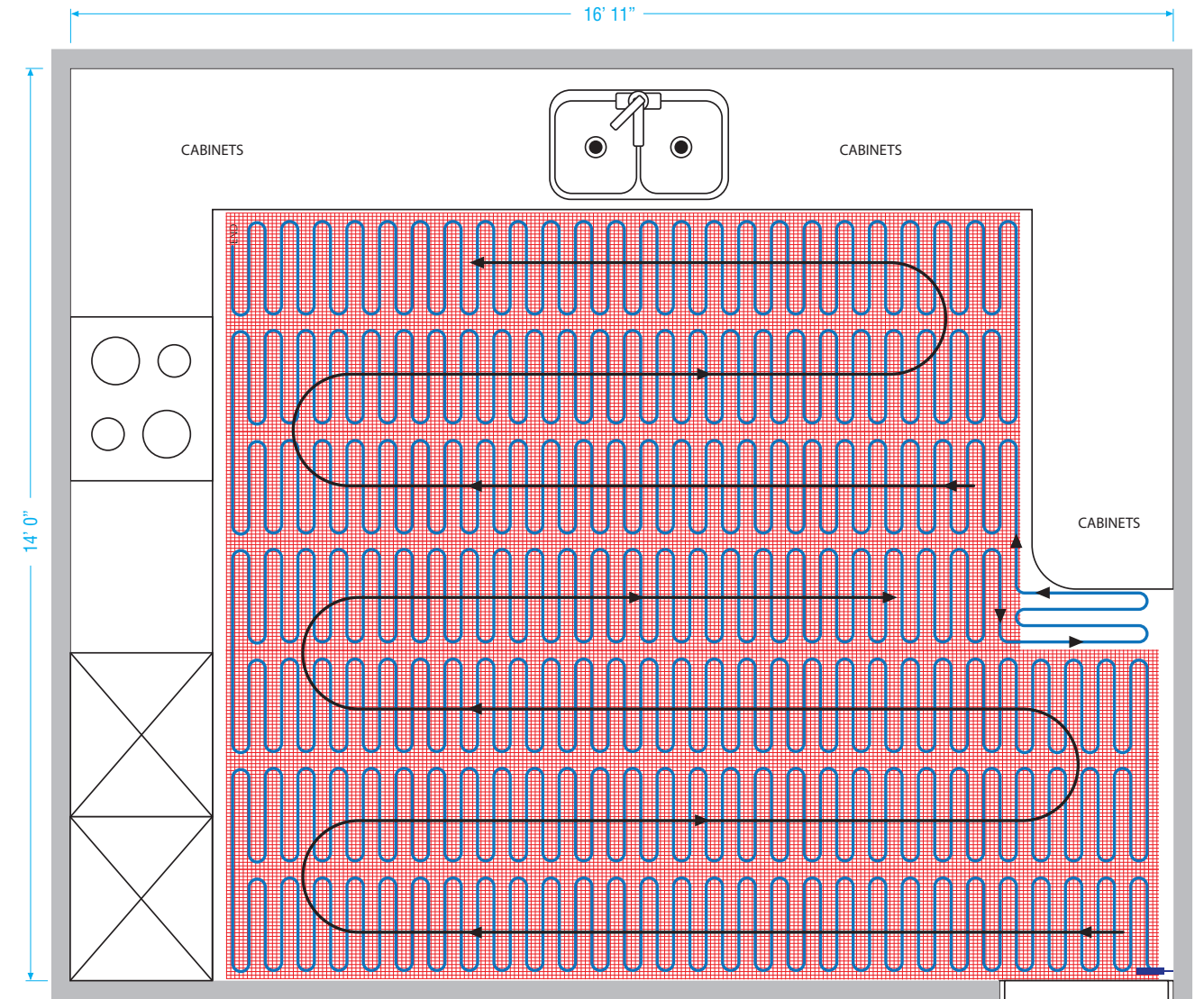
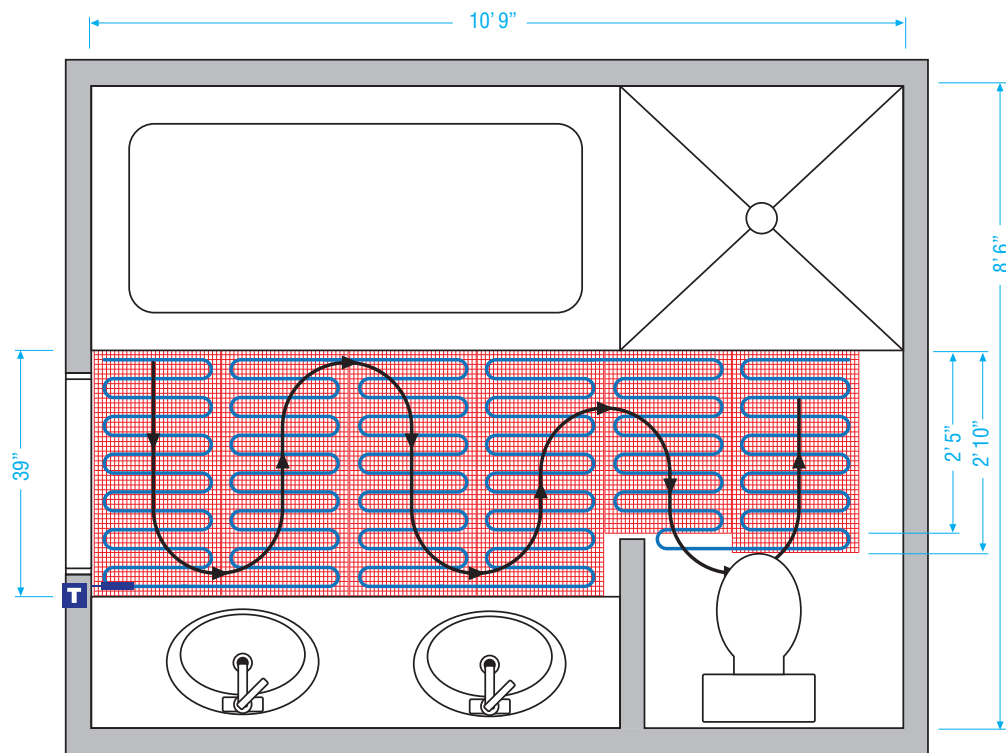
\*for 208V figures, see product specification sheet, which can be found on warmup.com

2. Code	Accessories	Canada	USA
ACC-DGMTR	The Alligator Tester - Digital Multimeter.	\$25.00	\$20.00
DCM-SP-10K	Additional Floor Sensor for the 4iE®.	\$26.00	\$21.00
RL-240V25A	General purpose 25A/240V relay used to expand the switching capability of the Warmup thermostats. Mounts in single gang box.	\$104.00	\$82.50

3. Code	Thermostat	Canada	USA
4iE-V04-WH	Warmup's most popular thermostat, the white WiFi 4iE®	\$309.00	\$289.00
4iE-V03-WH	Warmup's Non WiFi white 4iE®	\$249.00	\$223.00

4. Code	Optional Insulation	Canada	USA
WCI-01	Single 4'x2' Ultralight sheet with 3-in-1 capabilities: insulating, heat spreading, and decoupling.	\$27.66	\$21.28

# StickyMat™ Project Examples



Size 89 sq. ft.		Price \$602.00		Type StickyMat™	
Total Room Area	89 SQ FT			Specifications	
Surface to be Heated	35 SQ FT			Voltage	120
Heating System	DWM-120-420 FLOOR HEATING MAT	\$379.00		Amps	3.5
Thermostat	4iE THERMOSTAT	\$223.00		Monthly Cost to Run	\$6.13
		Subtotal		Total BTU Equivalent	1,433
		\$602.00			

Size 237 sq. ft.		Price \$1,604.50		Type StickyMat™	
Total Room Area	237 SQ FT			Specifications	
Surface to be Heated	160 SQ FT			Voltage	240
Heating System	DWM 240-2100 FLOOR HEATING MAT	\$1,381.50		Amps	8.8
Thermostat	4iE THERMOSTAT	\$223.00		Monthly Cost to Run	\$21.21
		Subtotal		Total BTU Equivalent	7,165
		\$1,604.50			

# FOIL System

For use under Carpet, Laminate and Floating Engineered Wood Floors

The Warmup FOIL system is an electric mat for floating floors that **requires no mortar**. The system can be customized for installation in regularly shaped spaces. The FOIL product is designed to be installed between underlay and the finished flooring.

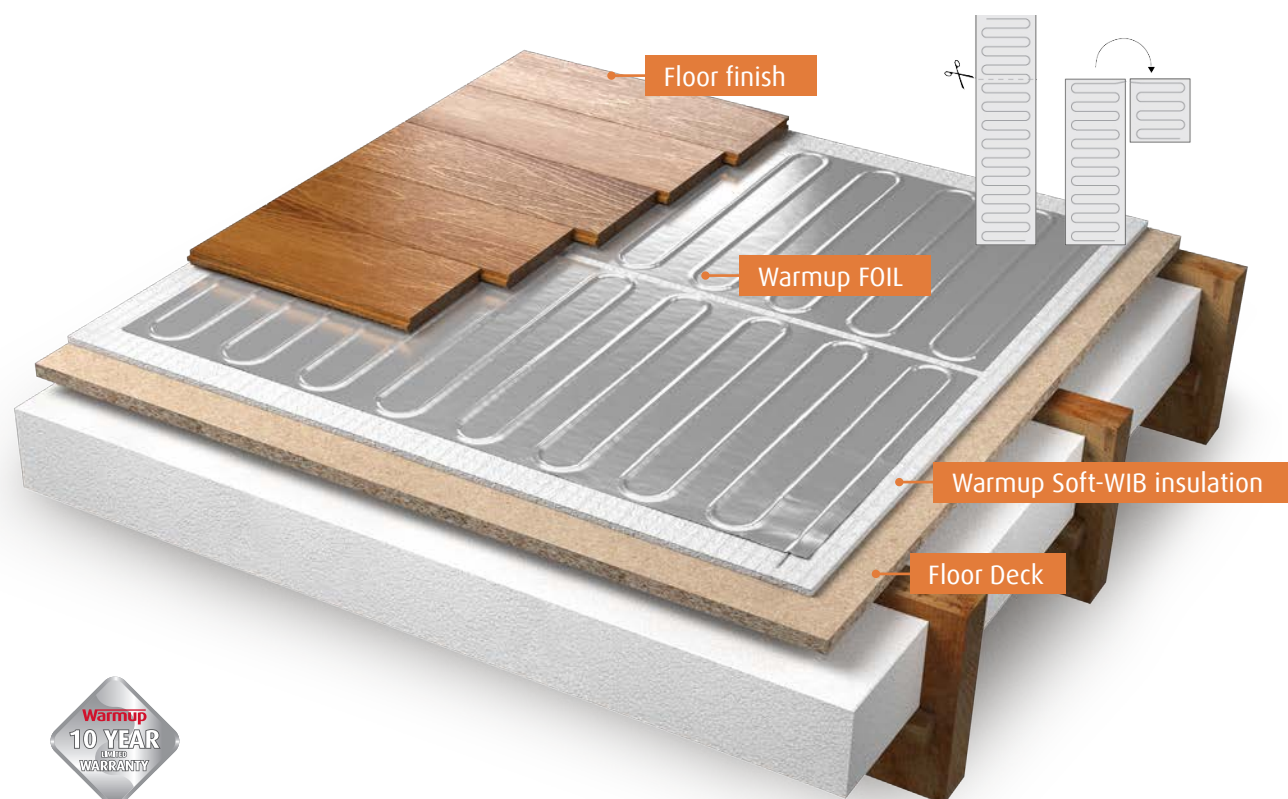
All tested carpet pads are sufficient underlay. For laminate and wood installations, Warmup recommends the use of WIU insulation to provide better heat outputs and faster heat-up times.



### Quote in 4 Easy Steps:

1. FOIL Heater
2. Accessories
3. Thermostat
4. Optional Insulation Underlay

Call Warmup for compatibility with LVT/LVP floors



1. Area (sqft)	Code	Mat length (20" wide)	Wattage	Amps	Resistance (Ω)	Canada	USA
20	FOIL-20-240	12'	240	1.0	240	\$309.00	\$237.00
25	FOIL-25-240	15'	300	1.25	192	\$329.00	\$297.00
40	FOIL-40-240	24'	480	2.0	120	\$459.00	\$444.50
50	FOIL-50-240	30'	600	2.5	96	\$589.00	\$555.50
60	FOIL-60-240	36'	720	3.0	80	\$709.00	\$666.00
70	FOIL-70-240	42'	840	3.47	69	\$829.00	\$777.00
95	FOIL-95-240	57'	1140	4.70	51	\$1,119.00	\$1,056.50
115	FOIL-115-240	69'	1380	5.71	42	\$1,249.00	\$1,180.50
130	FOIL-130-240	78'	1560	6.48	37	\$1,429.00	\$1,334.50
140	FOIL-140-240	84'	1680	7.05	34	\$1,579.00	\$1,437.50

2. Code	Accessories	Canada	USA
ACC-DGMTR	The Alligator Tester - Digital Multimeter.	\$25.00	\$20.00
RL-240V25A	General purpose 25A/240V relay used to expand the switching capability of the Warmup thermostats. Mounts in single gang box.	\$104.00	\$82.50
DCM-SP-10K	Additional Floor Sensor for the 4iE®.	\$26.00	\$21.00
TAPE-AL	Aluminum Foil Tape for grounding. Sold in 90ft roll.	\$27.00	\$21.00
ACC-WATCHDOG	The Watch Dog Tester - Sounds an alarm when connected to a broken heating cable.	\$25.00	\$20.00

3. Code	Thermostat	Canada	USA
4iE-V04-WH	Warmup's most popular thermostat, the white WiFi 4iE®	\$309.00	\$289.00
4iE-V03-WH	Warmup's Non WiFi white 4iE®	\$249.00	\$223.00

4. Code	Optional Insulation Underlay	Canada	USA
WIB-SOFT-1/4-110	Warmup Insulation Underlay 110 sqft rolls.	\$145.00	\$110.00

\*The FOIL product requires an underlay. Approved carpet padding and polyurethane sound barriers are acceptable underlay.

# Thermostats

“Alexa, set living room thermostat to 85 degrees”



4iE-V03-WH



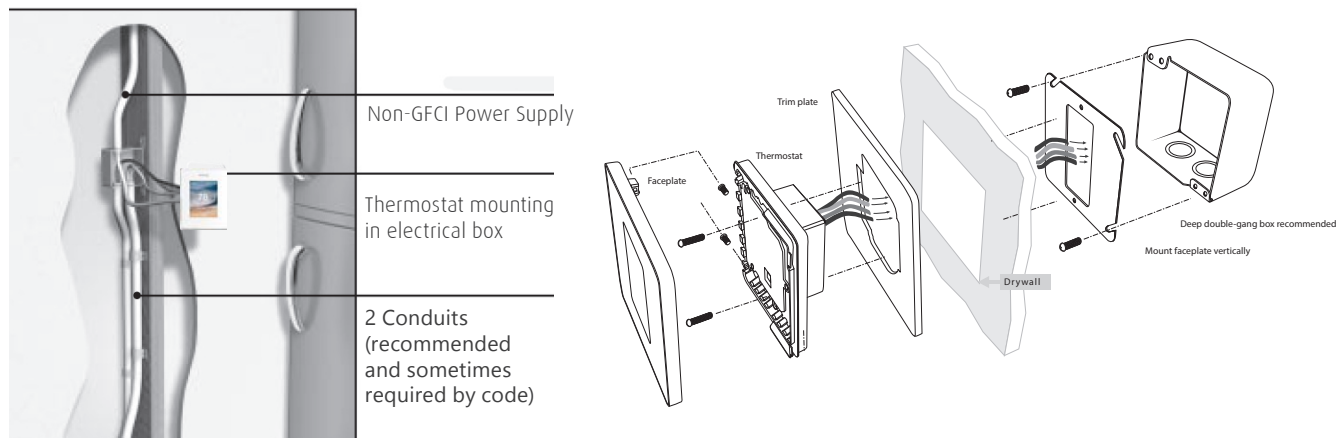
4iE-V04-WH

Code	Orientation	Color	WiFi/ Non WiFi	Max Load	Canada	USA
4iE-V03-WH	Portrait	White	Non WiFi	15A	\$249.00	\$223.00
4iE-V04-WH	Portrait	White	WiFi	15A	\$309.00	\$289.00
DCM-SP-10K*	N/A	White	N/A	N/A	\$26.00	\$21.00
RL-240V25A	N/A	N/A	N/A	25A	\$104.00	\$82.50

\*all thermostat boxes include one floor sensor DCM-SP-10K

\*\*all 4iE® models have a built-in Class A GFCI and can operate systems at 120, 208 or 240V, via ambient and floor sensor.

## THERMOSTAT INSTALLATION



# Insulation Boards Under Tile

Warmup Ultralight is a specialized composite board designed for floor heating applications. Manufactured as flat, flexible, sheets they are water

and mold resistant. The top surface incorporates a heat spreading aluminum layer combined with non-woven fleece.



Code	Description	Canada	USA
WCI-01	Single 4'x2' Ultralight sheet with 3-in-1 capabilities: insulating, heat spreading, and decoupling.	\$27.66	\$21.28

## Insulation Underlay For Floating Floors

Warmup Insulation Underlay is a thin polystyrene insulation barrier with effective acoustic properties to reduce contact noise.

It sits between the cold subfloor and Warmup FOIL Heating System, prevents heat loss and makes the underfloor heating system more efficient and effective. The Foil backing acts as an effective moisture barrier.



Code	Description	Canada	USA
WIB-SOFT-1/4-110	Warmup Insulation Underlay 110 sqft rolls.	\$145.00	\$110.00

# Warmup<sup>®</sup>

The world's **best-selling** floor heating brand™



Warmup Inc.  
USA

T: (888) 927-6333  
F: (888) 927-4721

[www.warmup.com](http://www.warmup.com)  
[ussales@warmup.com](mailto:ussales@warmup.com)



Warmup Inc.  
Canada

T: (888) 592-7687  
F: (888) 927-4721

[www.warmup.ca](http://www.warmup.ca)  
[ca@warmup.com](mailto:ca@warmup.com)



Warmup Inc.  
Mexico

T: +52 (55) 8114 0145  
o +52 (55) 8114 0146

[www.warmup.com.mx](http://www.warmup.com.mx)  
[mexico@warmup.com](mailto:mexico@warmup.com)

QUESTIONS / QUOTES

[ussales@warmup.com](mailto:ussales@warmup.com)

For sales support and quotes in just 24 hours, contact us at [ussales@warmup.com](mailto:ussales@warmup.com)

TECHNICAL

[warmupedia.warmup.com](http://warmupedia.warmup.com)

Warmupedia documents installation tips and troubleshooting guides for all Warmup products.