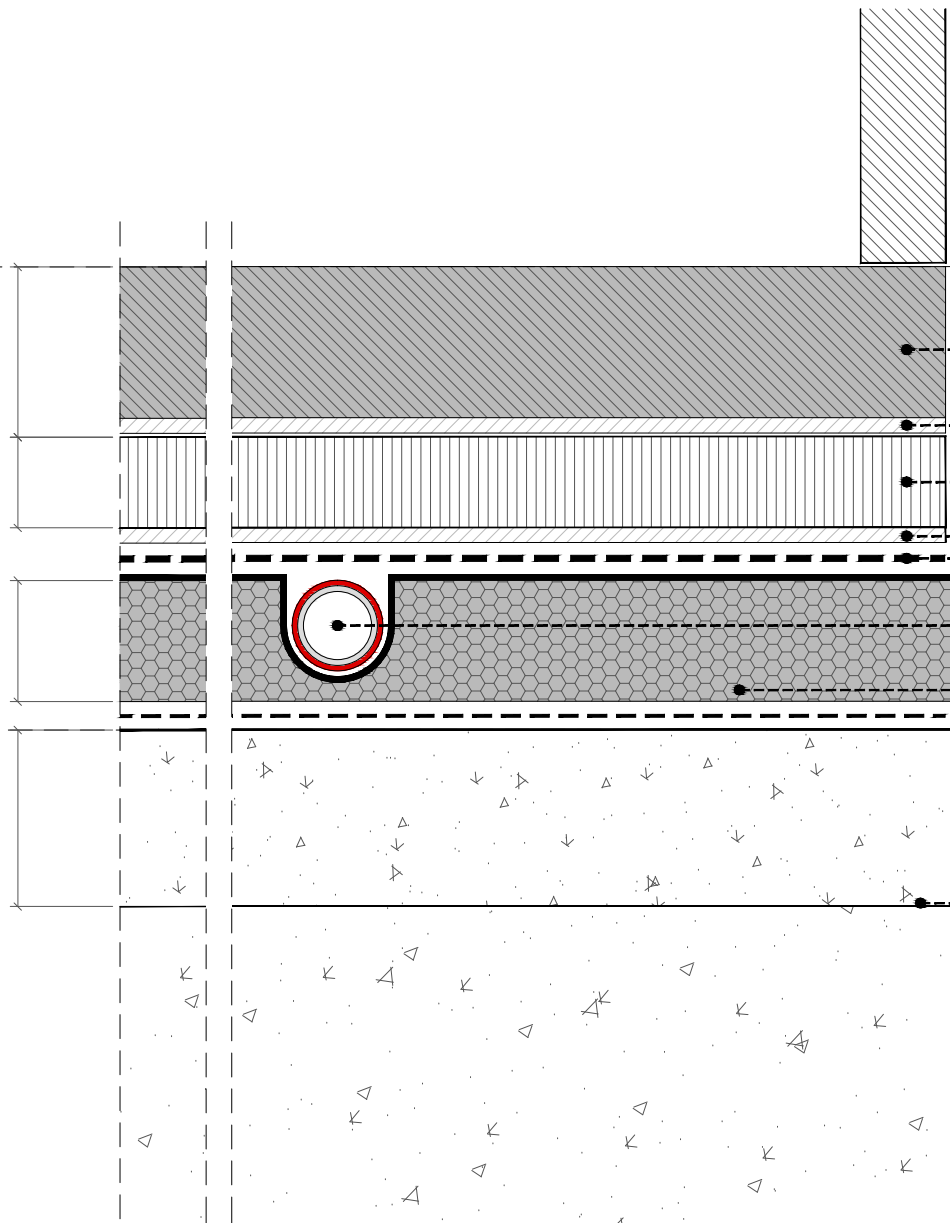


Proposed FFL

VARIES
12
16
VARIES



- 01_Floor Finish: Ceramic tiles / Stone
[for heavy footfall areas]
- 02_Warmup Adhesive
[WHS-X-SEAL25]*
- 03_Warmup WDOC
- 04_Warmup Adhesive
[WHS-X-SEAL25]*
- 05_Warmup Primer
[WHS-X-PRIMER]*
- 06_Warmup PEX-A 12mm pipework
- 07_Warmup Total-16 includes:
-Pre-installed diffusion plates
-Insulation [0.034 W/m K @ 10°C]
- 08_Warmup Glue
[WHS-X-GLUE]
- 09_Subfloor

* It is recommended to use only Warmup's Adhesive and Primer

Warmup

The world's **best-selling** floor heating brand™

WARMUP PLC, 702 Tudor Estate, Abbey Road, London, NW10 7UW
Tel 0845 034 8270 Fax 0208 453 6869
projects@warmup.com www.warmup.co.uk

© This drawing is confidential and may not be used, copied or disclosed to anyone without permission of Warmup Plc. The Copyright of these drawings remain the property of Warmup Plc. Do not scale from drawings, all dimensions to be checked on site. The Warmup word and associated logos are trade marks. © Warmup Plc. 2010 - Regd. TM Nos. 1257757, 4409926, 5265707, E & OE. Registered in England No. 2955213.

TITLE: TOTAL-16_Ceramic tiles / Stone [for heavy footfall areas]

SCALE: 1.1_A4 DATE: 10.06.2015

DESIGNER: ALBERTO A VERSION: 03